

Figure 1 - Map of main routes through Botley



Figure 2 - Extent of AQMA4 along Mill Hill, Botley High Street and Broad Oak

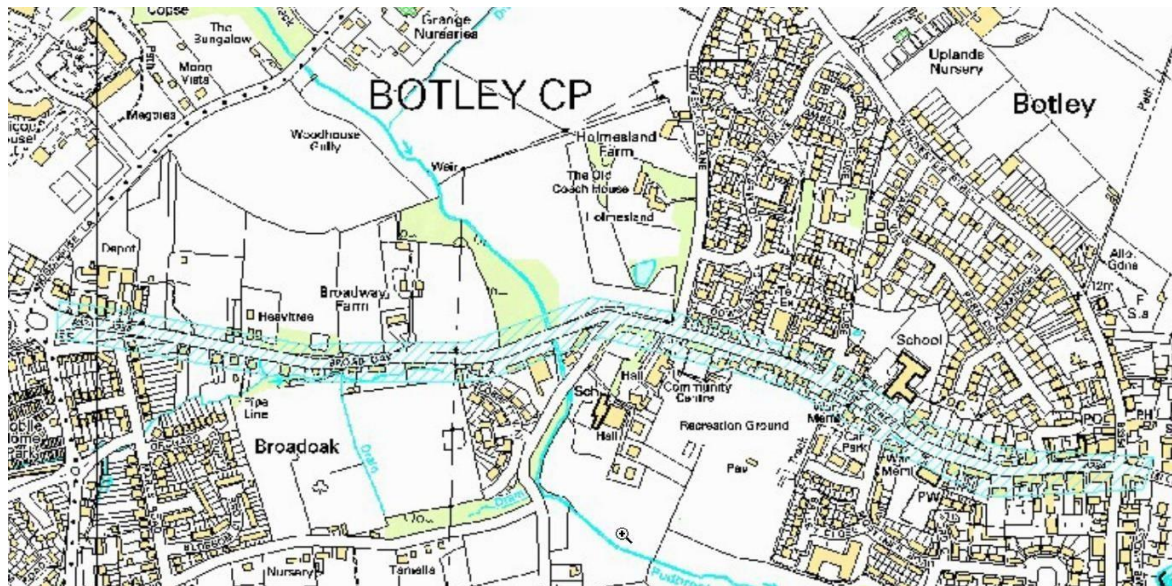


Figure 3 - Preferred route of the Botley Bypass

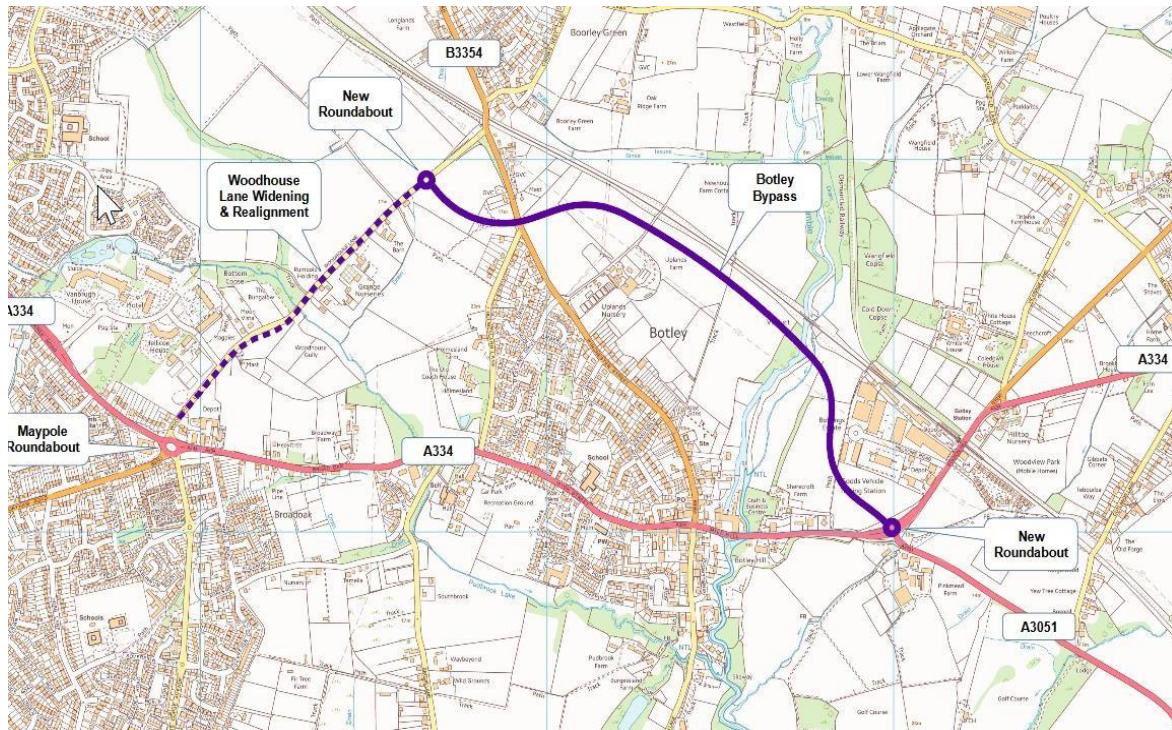


Figure 4 - Possible new green space (outlined in red) alongside the Botley Bypass

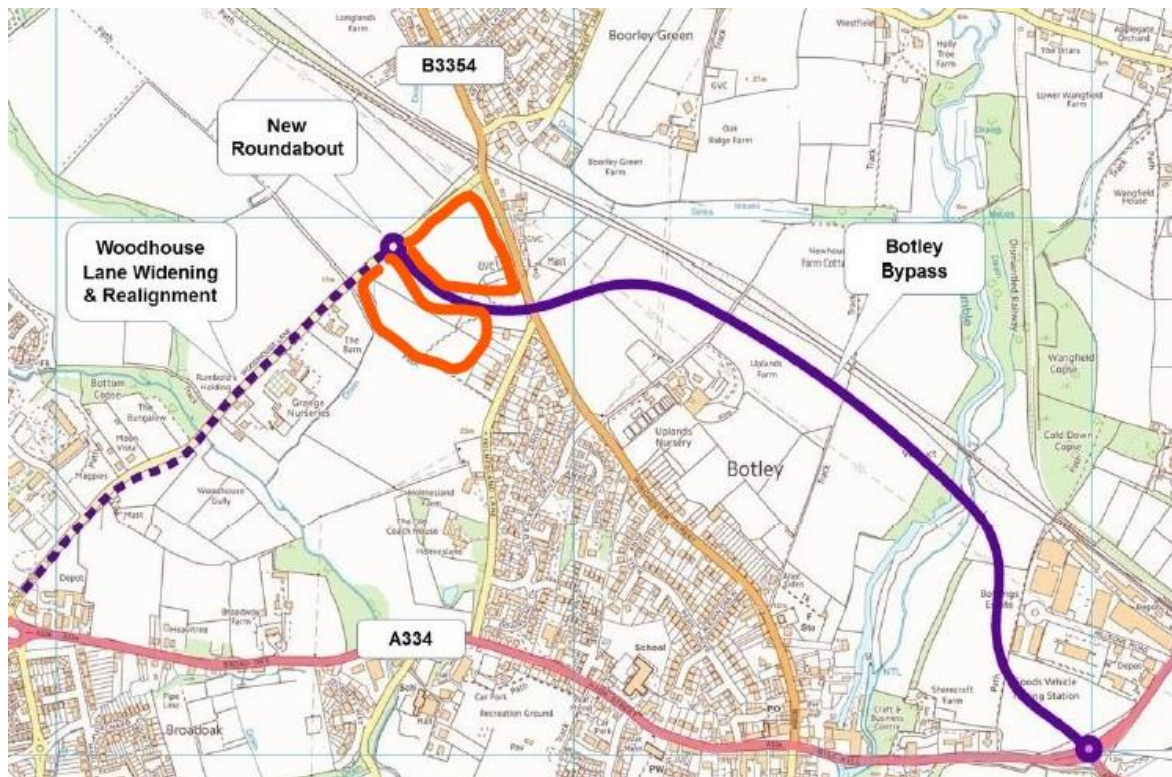


Figure 5 - Proposed junctions on the Botley Bypass

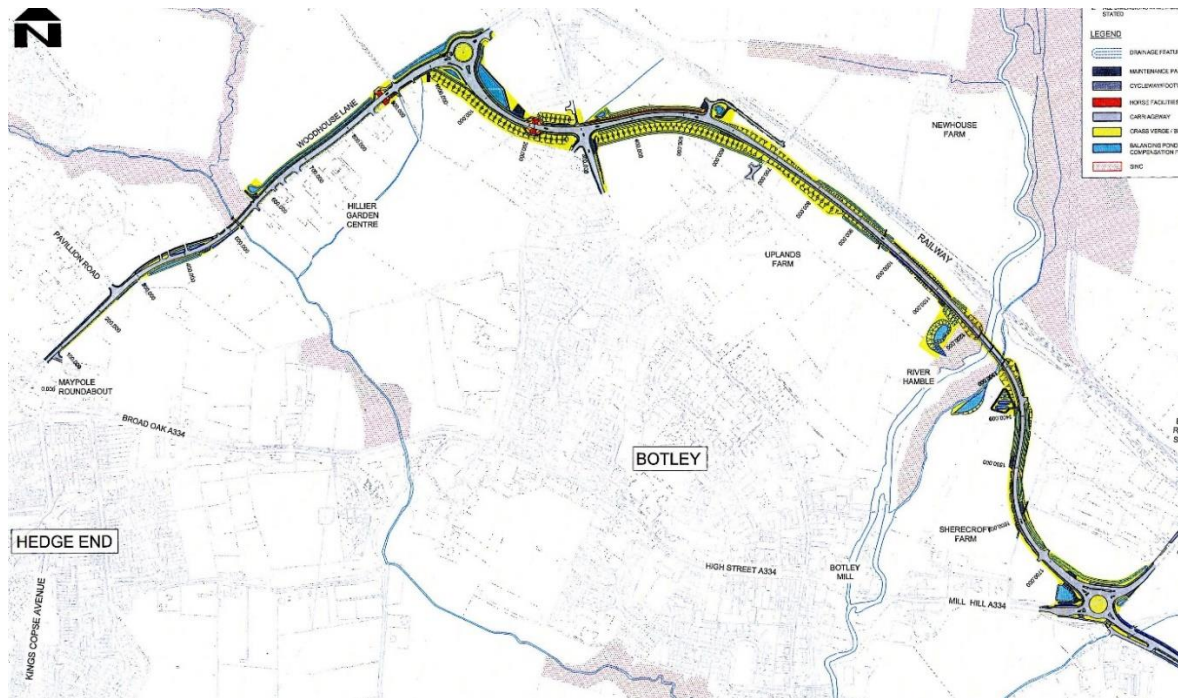


Figure 6 - Ghost Island Priority Junction at the intersection of Winchester Street and the Bypass

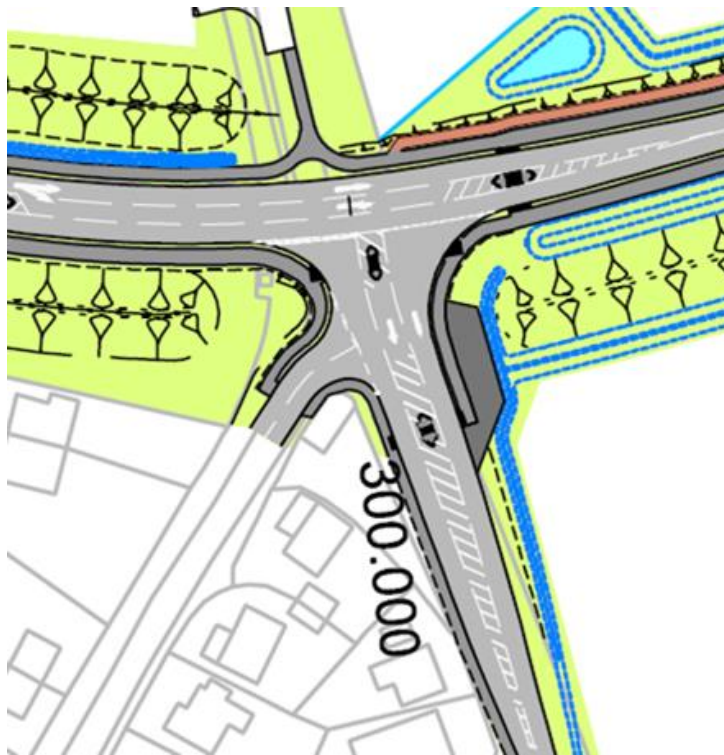


Figure 7 - Bluestar 3 bus route after completion of the Bypass



Figure 8 - Uplands Farm (Winchester Street) development vehicle access

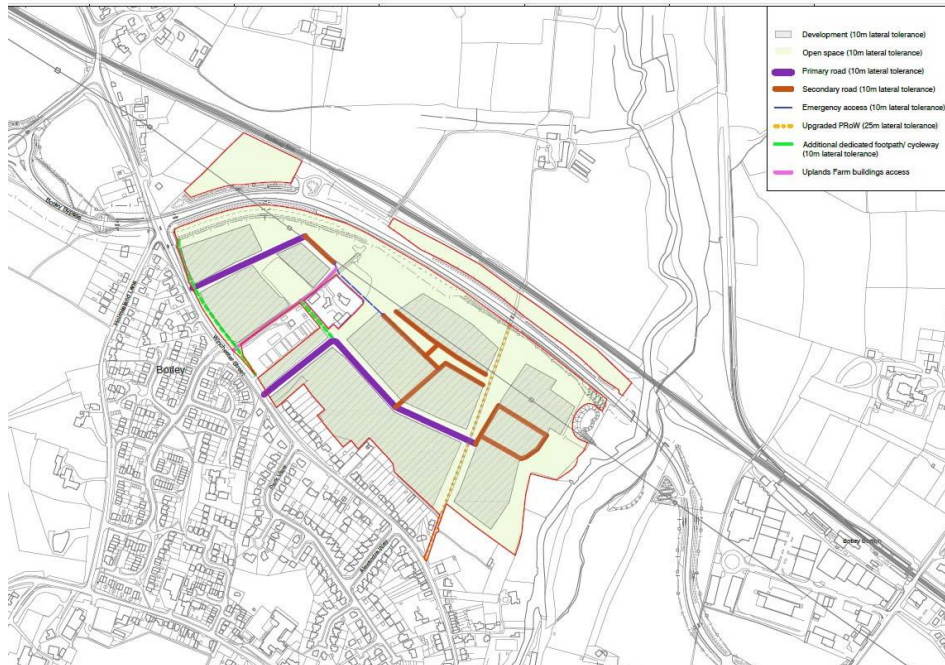


Figure 9 - Sheerecroft Farm development vehicle access

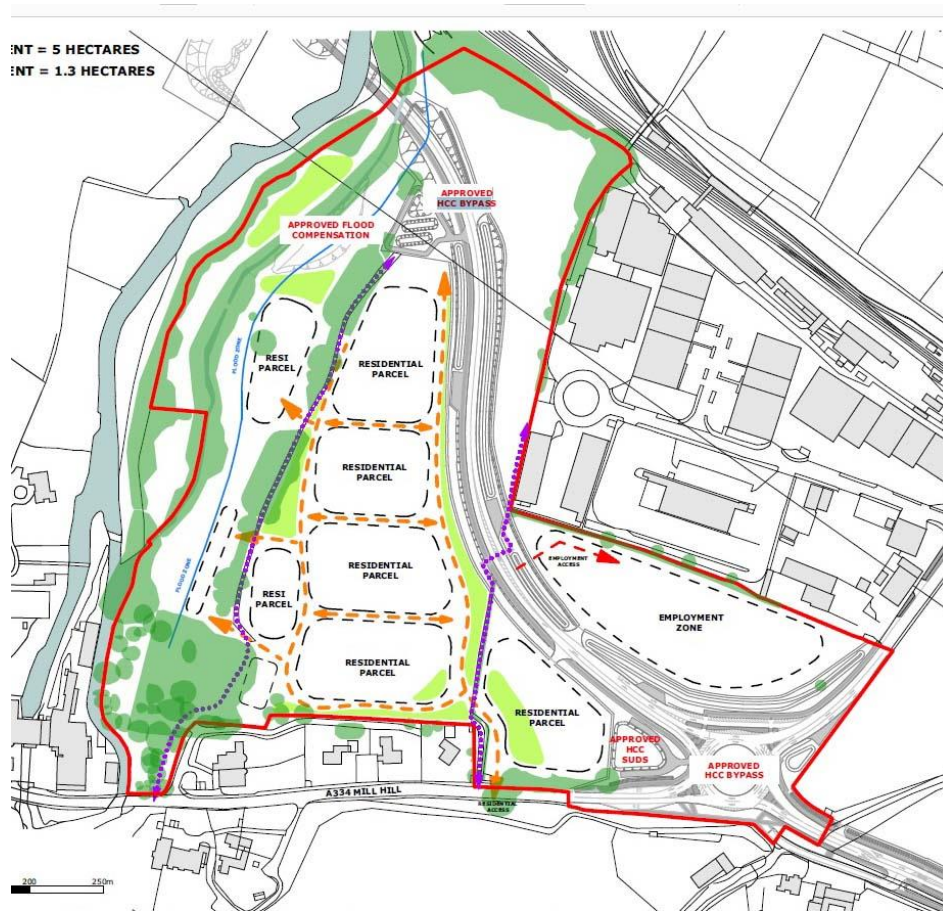


Figure 10 - Second exit from Boorley Park via Wallace Avenue



Table 1 - Speed Indicator Device (SID) data

	Monitored	Limit	Location of SID
Kings Copse Avenue	14-20 Oct 2019	40 mph	Between Winchester Street and Botley Mills, measuring west bound traffic
Winchester Road	21-26 Jul 2020	30 mph	Close to Oatlands Road junction, measuring north bound traffic
Maddoxford Lane	03-06 Sep 2020	30 mph	Between Oatlands Road and Crows Nest Lane, measuring east bound traffic
	The temporary closure of Wangfield Lane at the site of the old railway bridge ceased on 24 August		
Mill Hill	14-20 Sep 2020	30 mph	Between Winchester Street and Botley Mills, measuring west bound traffic

	Mean traffic speed	% of traffic over speed limit	Mean speed of those over speed limit	Maximum speed recorded
Kings Copse Avenue	30.2 mph	0.4%	42.5 mph	50 mph
Winchester Road	28.2 mph	42.9%	34.5 mph	55 mph
Maddoxford Lane	24.6 mph	12.5%	33.1 mph	55 mph
Mill Hill	20.3 mph	8.1%	33.2 mph	50 mph

Figure 11 - Eastern Parish boundary on Maddoxford Lane

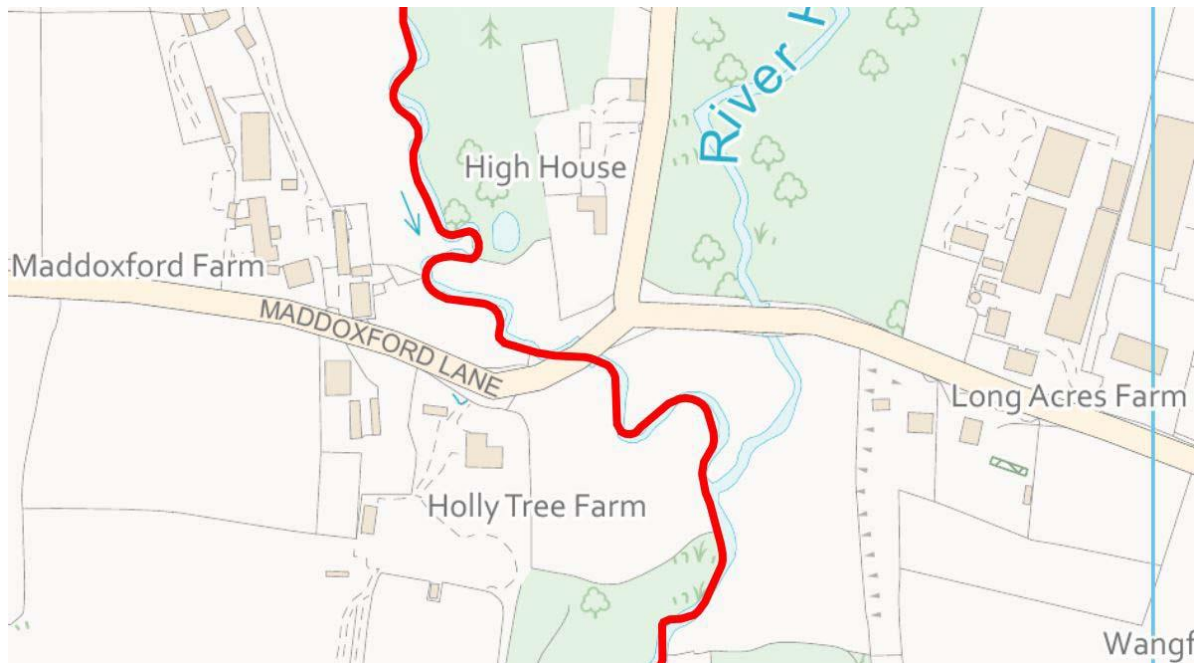


Figure 12 - Public car parking in the central area of Botley

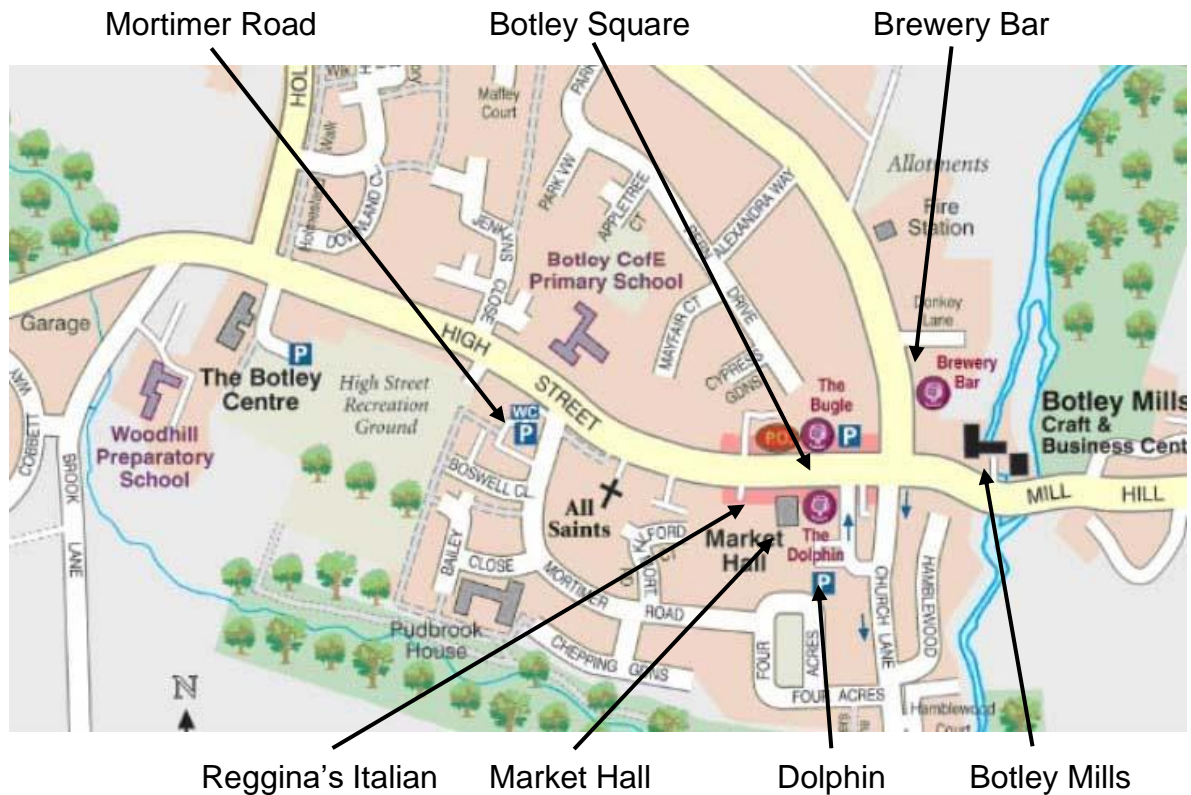


Figure 13 - HGV guidance at Denham's Corner on the B3354



Approaching Denham's Corner from the west on the B3354



Sign on entrance to Winchester Road at Denham's Corner



Sign on entrance to Tollbar Way (B3342) at Denham's Corner