

Infrastructure Paper Appendix

Figure 1- Botley Conservation Area

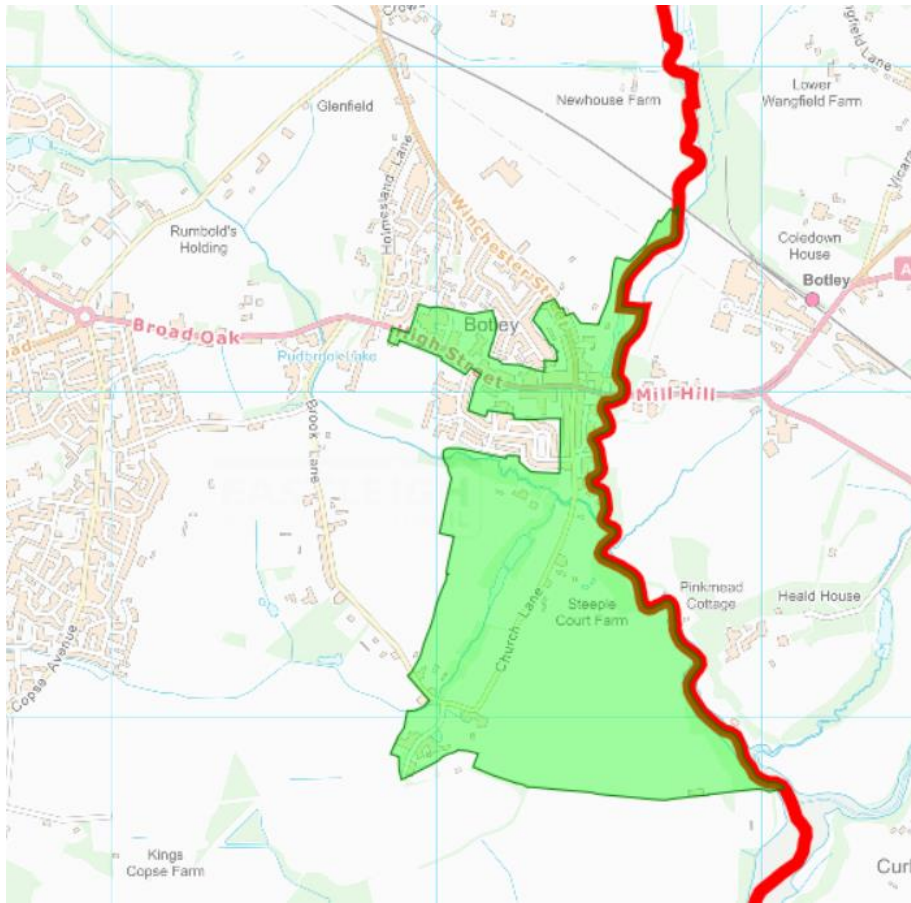
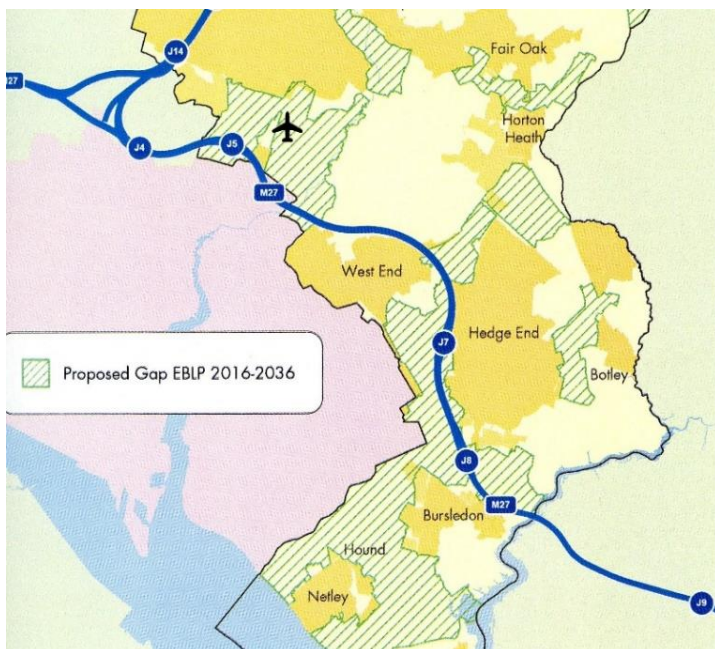
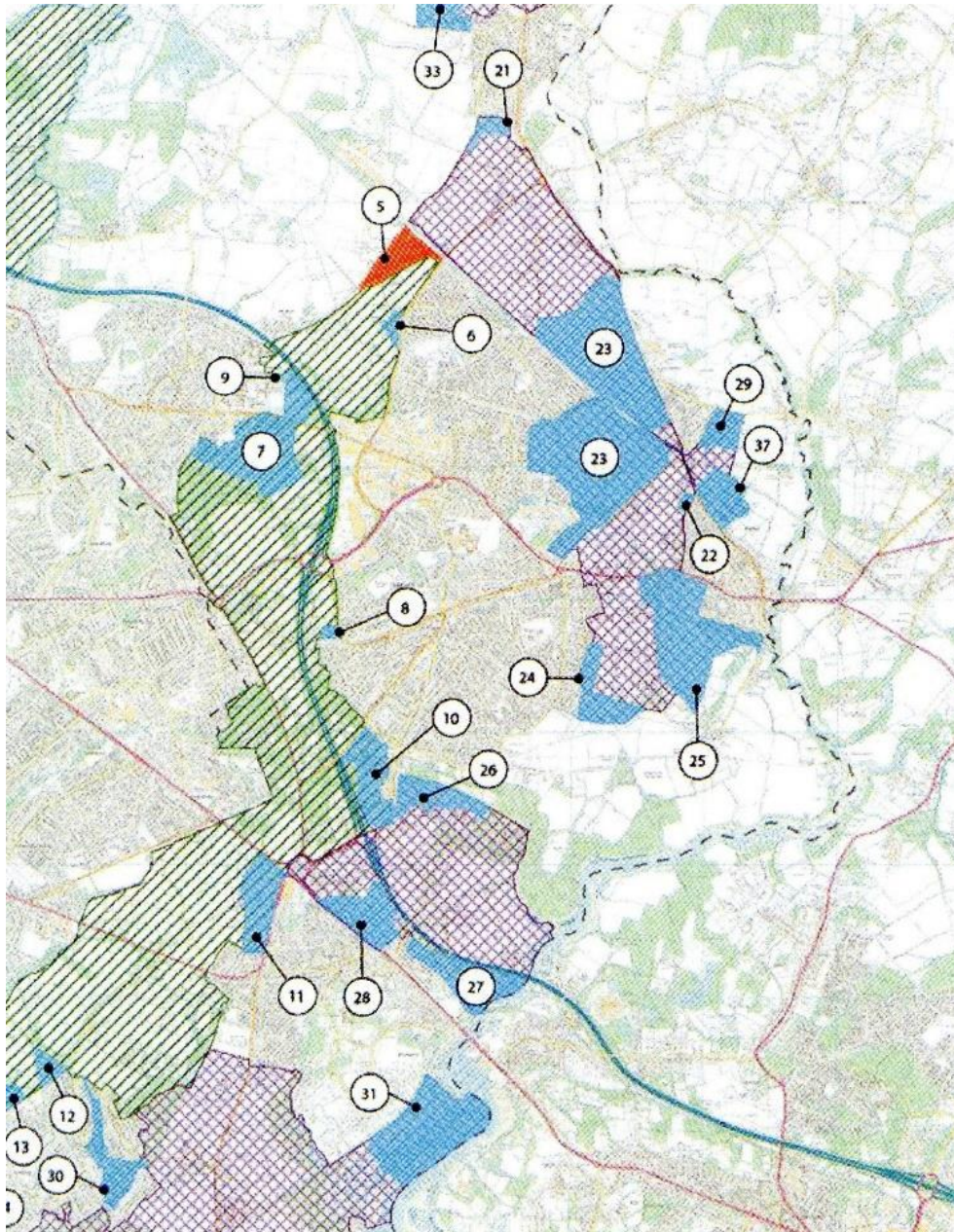


Figure 2 - Countryside Gaps (EBLP Figure 5 page 53)



Infrastructure Paper Appendix

Figure 3 - Proposed changes to existing Gaps, blue hatched areas are recommended for removal (EB Countryside Gaps Background Paper Figure 14 page 32)



Infrastructure Paper Appendix

Figure 4a - Areas for reinstatement of the Settlement (Local) Gaps

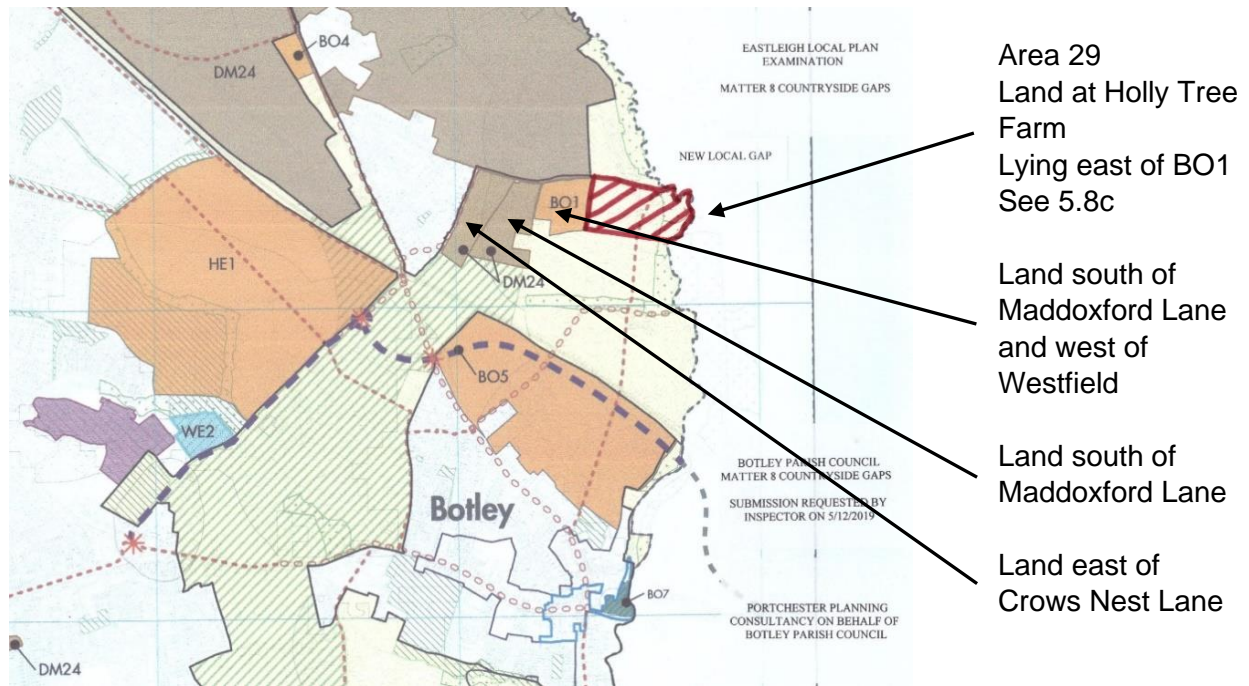
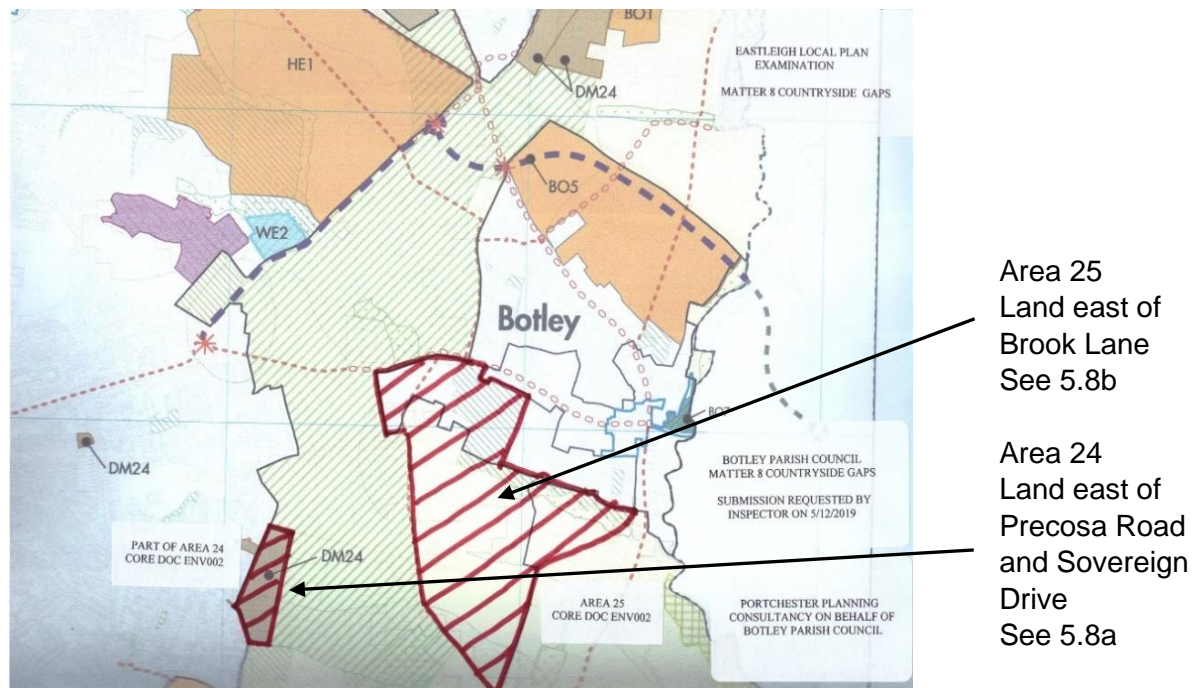
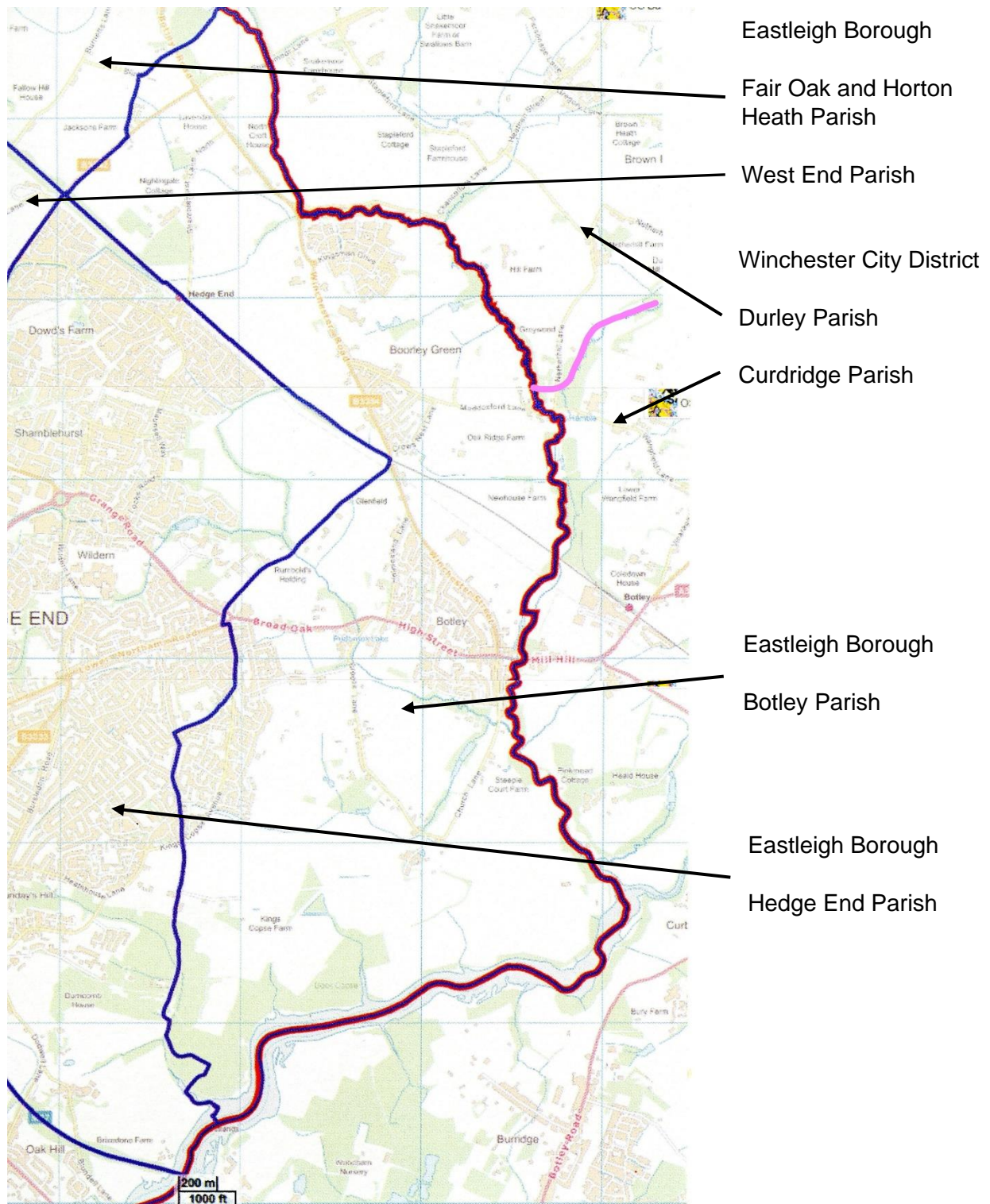


Figure 4b - Areas for reinstatement of the Settlement (Local) Gaps



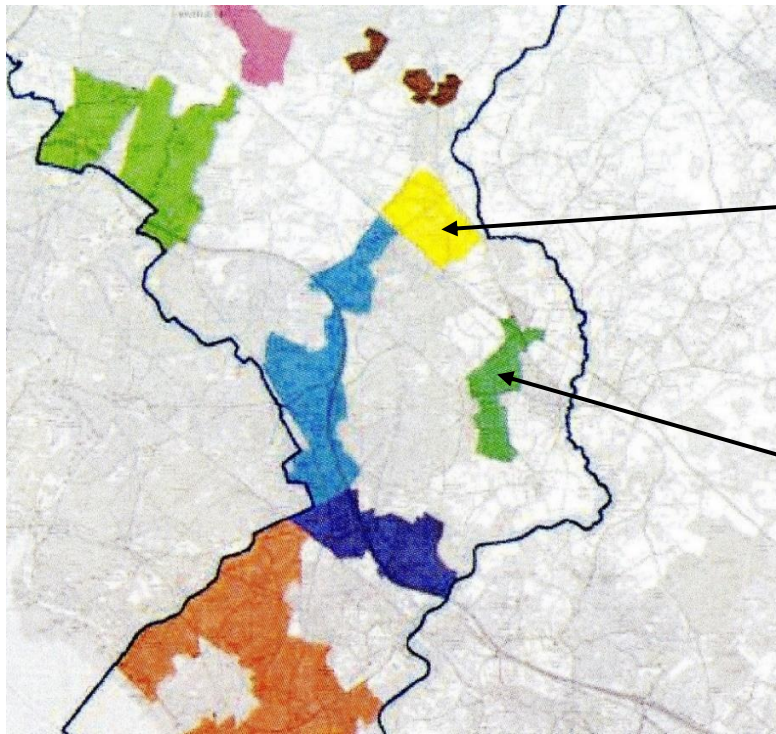
Infrastructure Paper Appendix

Figure 5 - Botley Parish boundary in blue and Eastleigh Borough boundary in red



Infrastructure Paper Appendix

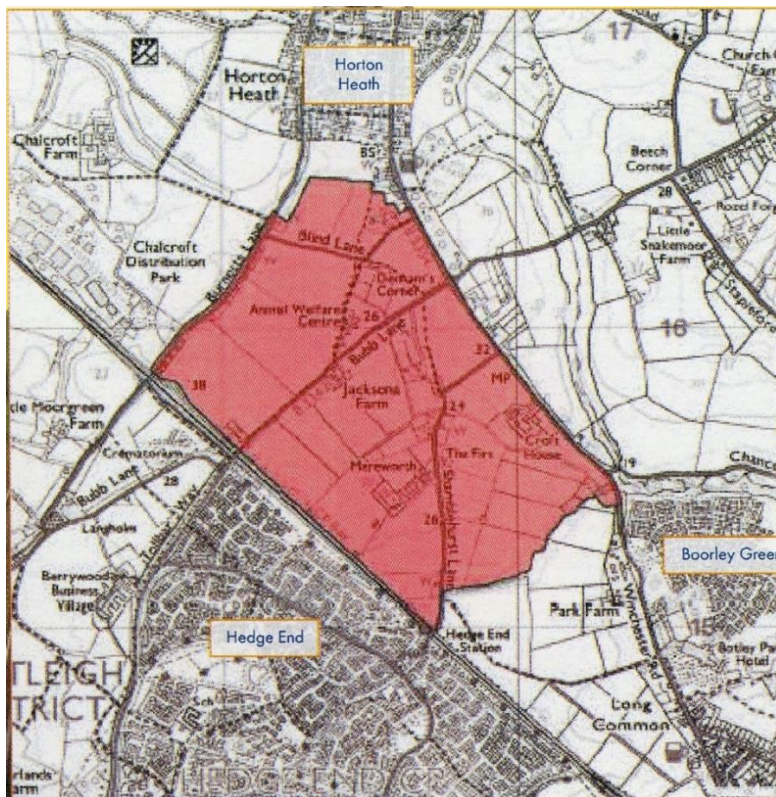
Figure 6 - Deacon Design Gap Analysis, Settlement Gaps



Area D
Hedge End, Horton
Heath and Boorley Green
Settlement Gap

Area I
Botley, Hedge End and
Boorley Green Settlement
Gap

Figure 7 - Hedge End, Horton Heath and Boorley Green Settlement Gap



Infrastructure Paper Appendix

Figure 8 - DM24 Housing Sites abutting Hedge End, Horton Heath and Boorley Green Settlement Gap

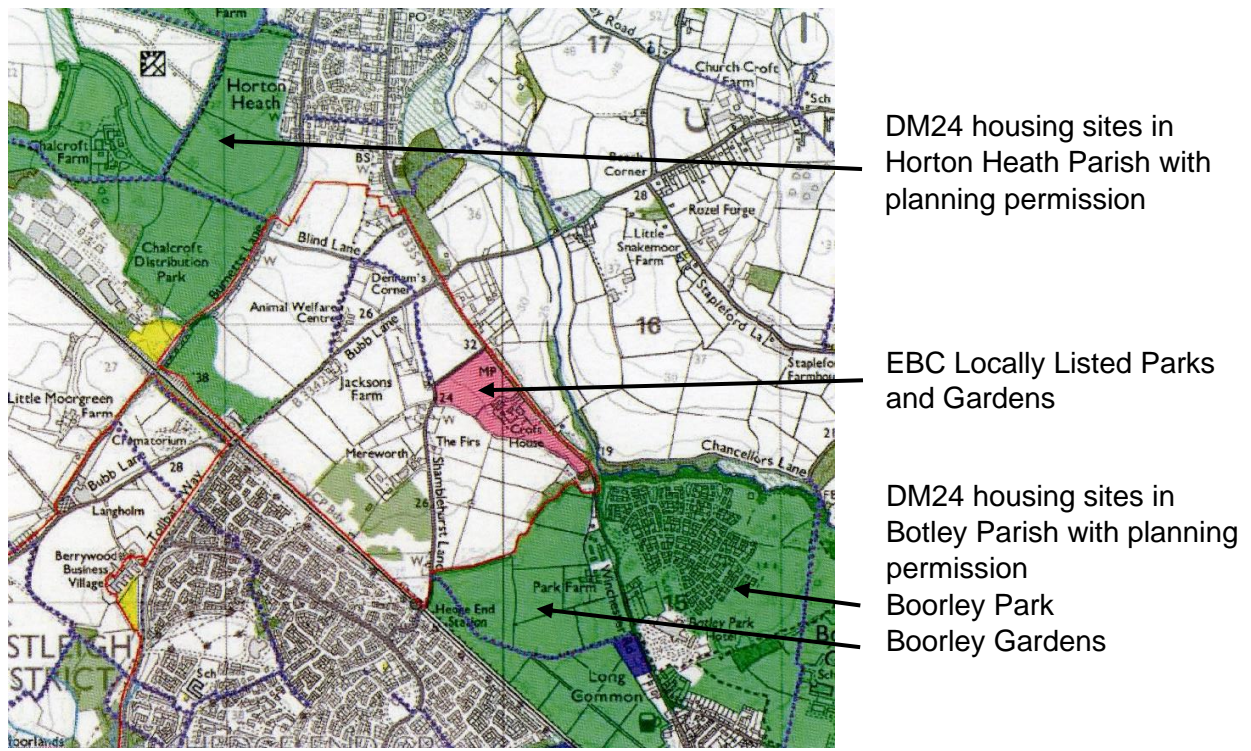
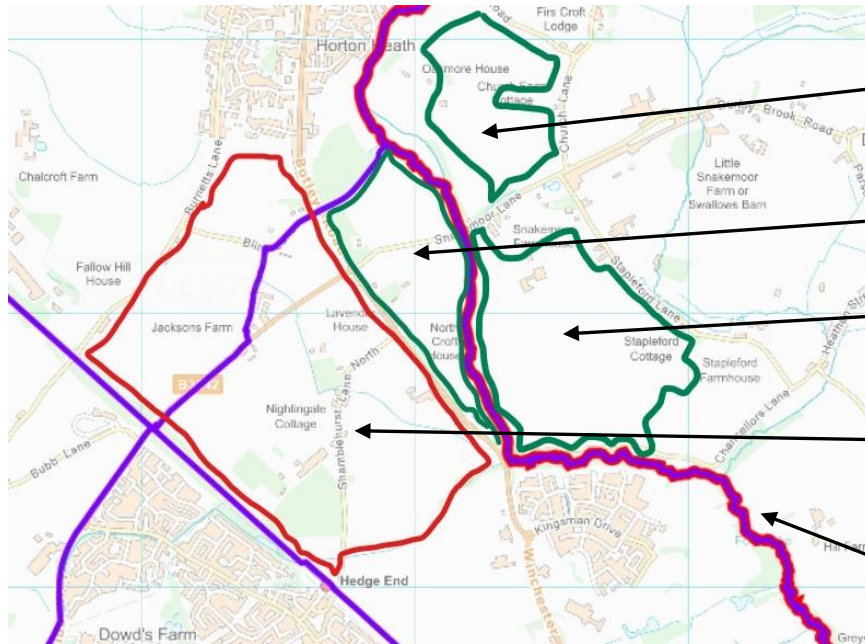


Figure 9 - Sub-areas in Hedge End, Horton Heath and Boorley Green Settlement Gap



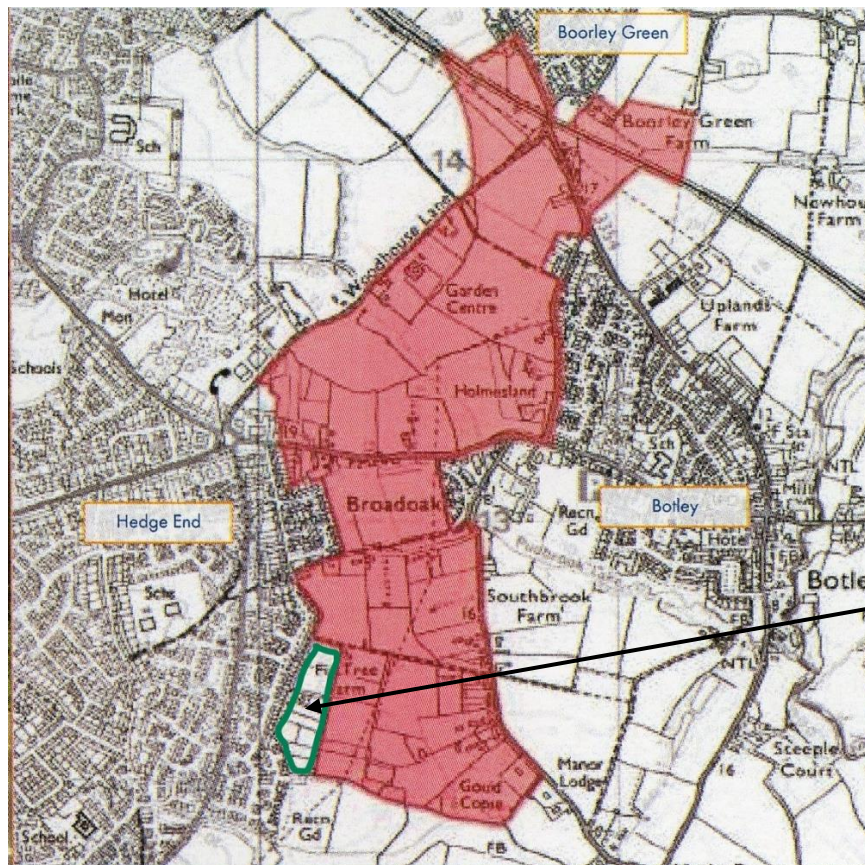
Infrastructure Paper Appendix

Figure 10 - Countryside to the east of the Hedge End, Horton Heath and Boorley Green Settlement Gap



- DU11 Land at Church Farm (Area C)
Area A and C for 533 dwellings
- Countryside to the east of the Settlement Gap
- DU07 Snakemore Farm for 705 dwellings
- Hedge End, Horton Heath and Boorley Green Settlement Gap
- Botley Parish and Eastleigh Borough boundary

Figure 11 - Botley, Hedge End and Boorley Green Proposed Settlement Gap



- Land to the east of Sovereign Drive and Precosa Road excluded from Settlement Gap in Eastleigh Borough Local Plan and subsequently reinstated

Infrastructure Paper Appendix

Figure 12 - S3 Housing Sites abutting Hedge End, Horton Heath and Boorley Green Settlement Gap

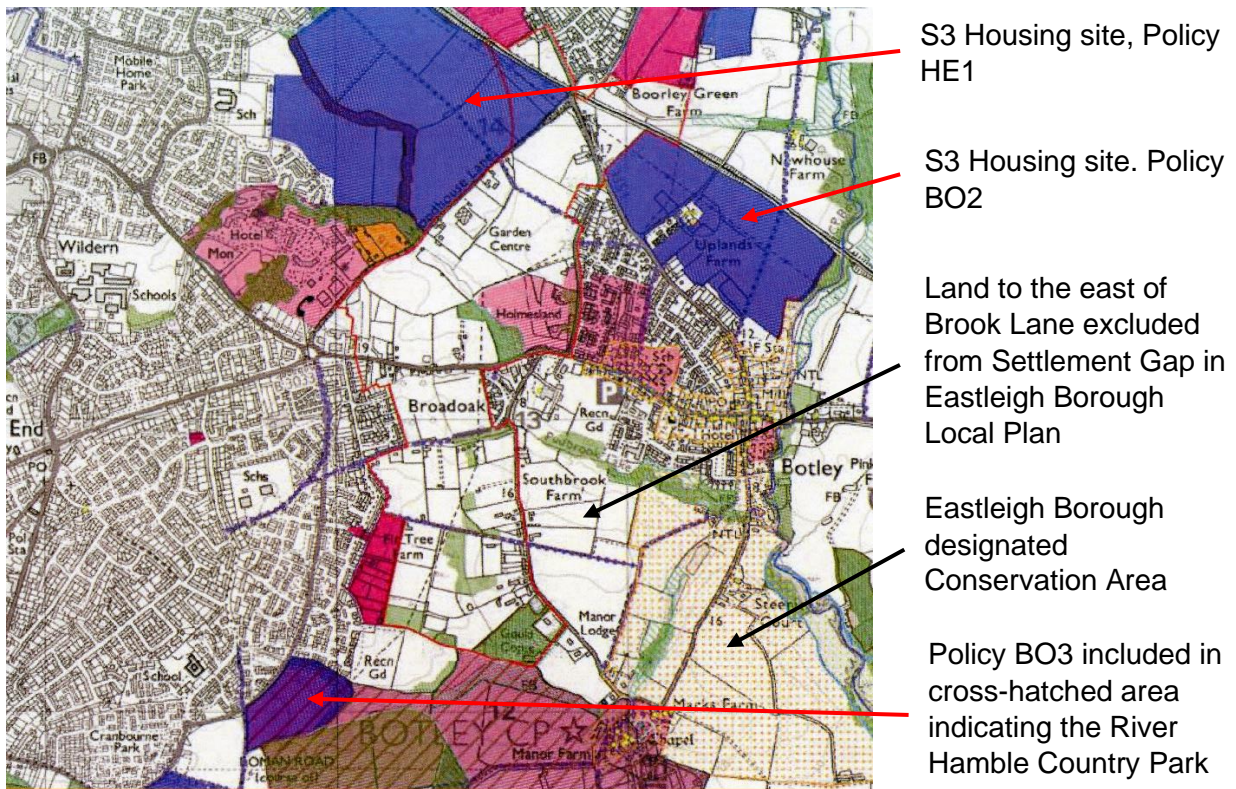


Figure 13 - Northern sub-areas in Hedge End, Horton Heath and Boorley Green Settlement Gap



Infrastructure Paper Appendix

Figure 14 - Southern sub-areas in Hedge End, Horton Heath and Boorley Green Settlement Gap

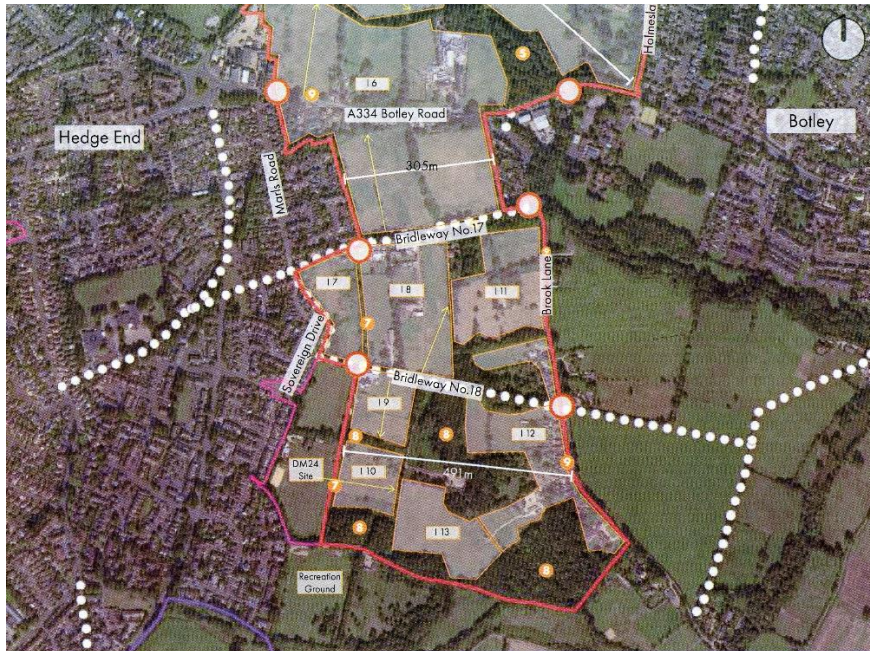


Figure 15 - parcels of land recommended for removal from the Hedge End, Horton Heath and Boorley Green Settlement Gap

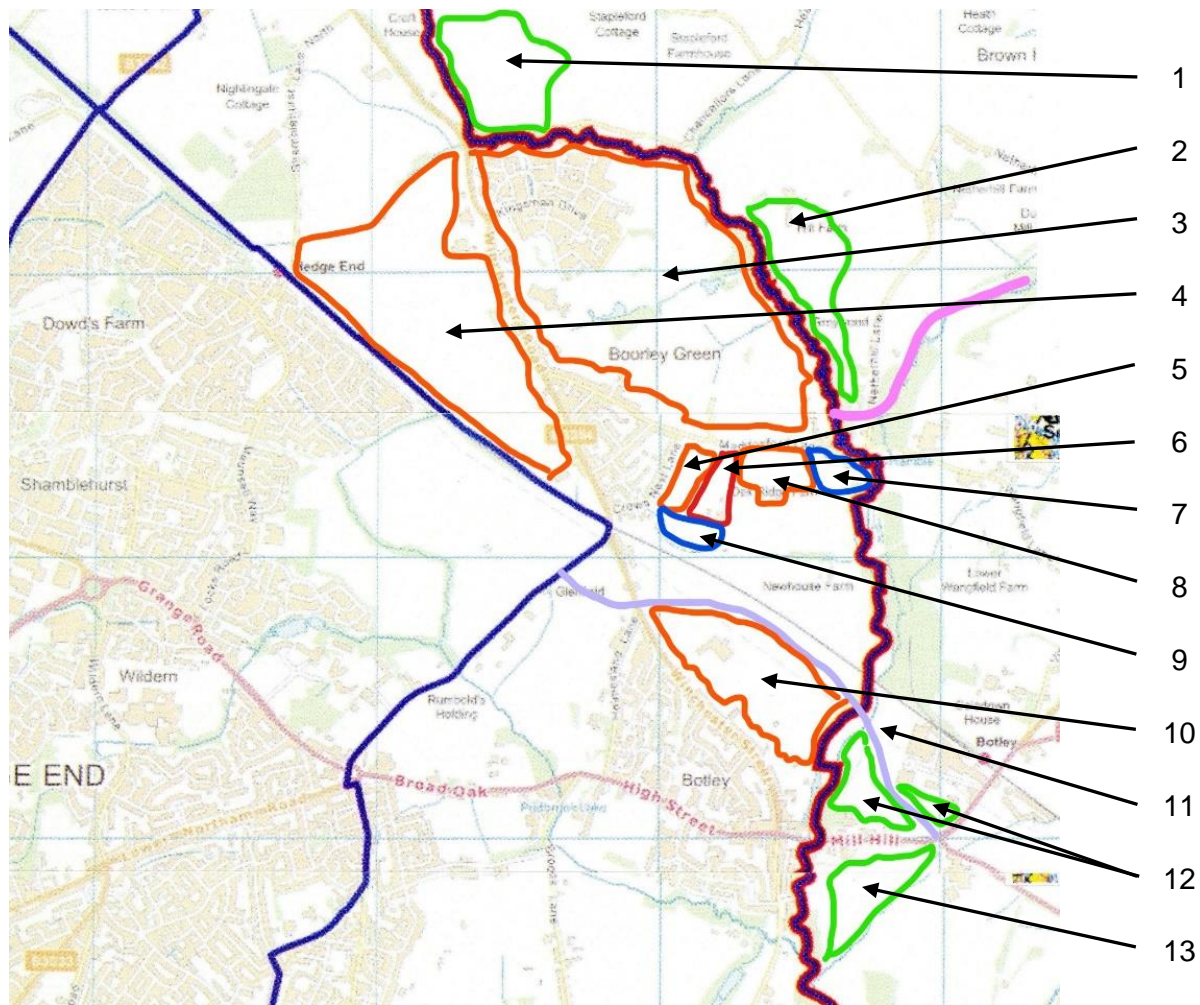


Parcels of land recommended for removal from sub-area I1

Parcel of land recommended for removal from sub-area I16

Infrastructure Paper Appendix

Figure 16 - Development sites along the eastern boundary of Botley Parish



1	Snakemore Farm, WCC SHELAA DU07, potential 705 dwellings
2	Hill Farm, Netherhill, WCC SHELAA DU14, potential 881 dwellings
3	Land north and east of Boorley Green (Boorley Park) (O/12/71514), 1397 dwellings under construction
4	Land north east of Hedge End Station (Boorley Gardens) (O/15/75953), permission for 680 dwellings
5	Land east of Crows Nest Lane (O/16/78389), 50 dwellings under construction
6	Land south of Maddoxford Lane (O/16/79600), permission for 50 dwellings with a further 36 applied for
7	Land at Holly Tree Farm removed by EBC from Settlement Gap and reinstatement requested by BPC
8	BO1 land south of Maddoxford Lane and west of Westfield, potential for 30 dwellings
9	Land recommended in Deacon Design Report for removal from Settlement Gap
10	BO2 land north east of Winchester Street (Uplands Farm), permission for 300-375 dwellings (O/18/83698)
11	Route of Botley Bypass
12	Sherecroft Farm development, WCC SHELAA CU06 (20/00494/FUL), permission for 176 dwellings and small industrial site
13	Land west of Pinkmead Farm, WCC SHELAA CU10, potential for 129 dwellings

Infrastructure Paper Appendix

Figure 17 - Little Hatts Recreation Ground and Norman Rodaway Facilities (Parish boundary is along the line of Bridleways 501 and 20 and Footpath 15)

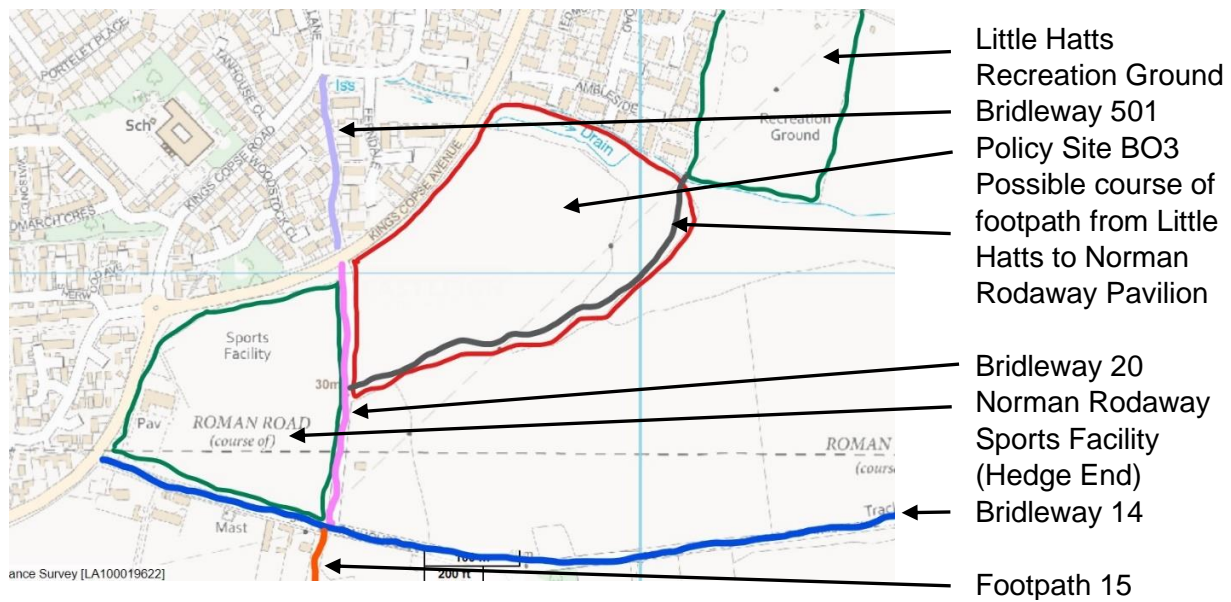
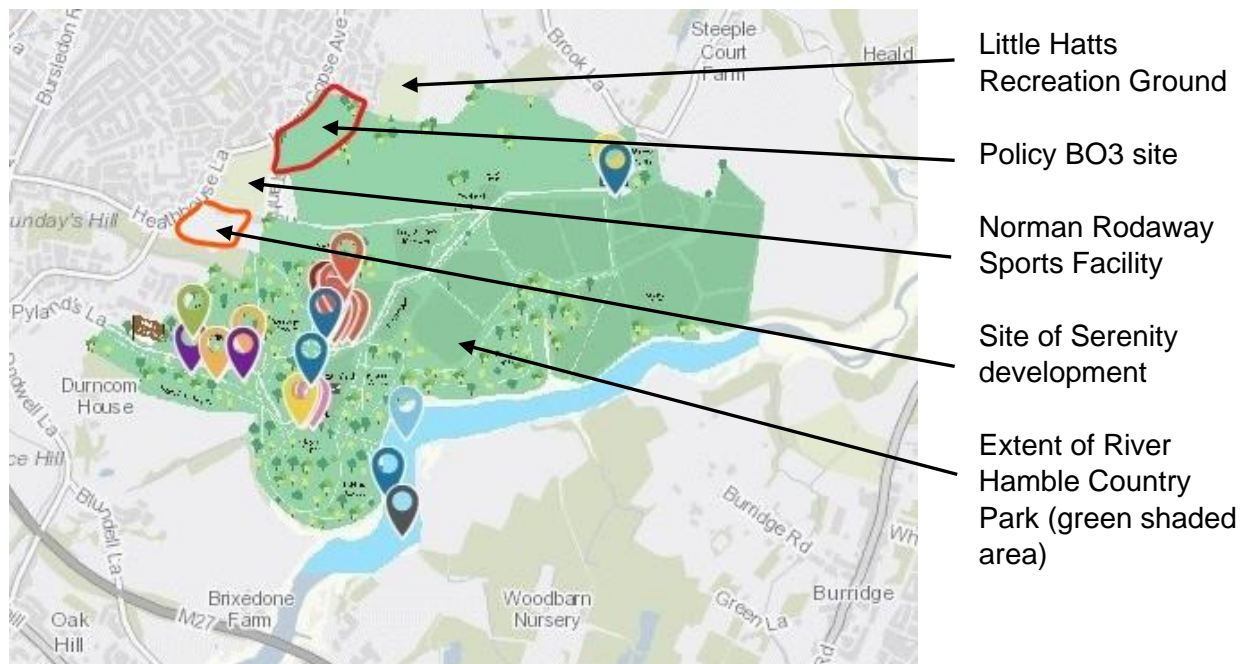


Figure 18 - River Hamble Country Park and area allocated for Eastleigh Borough Local Plan Policy BO3



Infrastructure Paper Appendix

Figure 19 - Extent of the River Hamble Country Park and Policy BO3 site from LUC Report

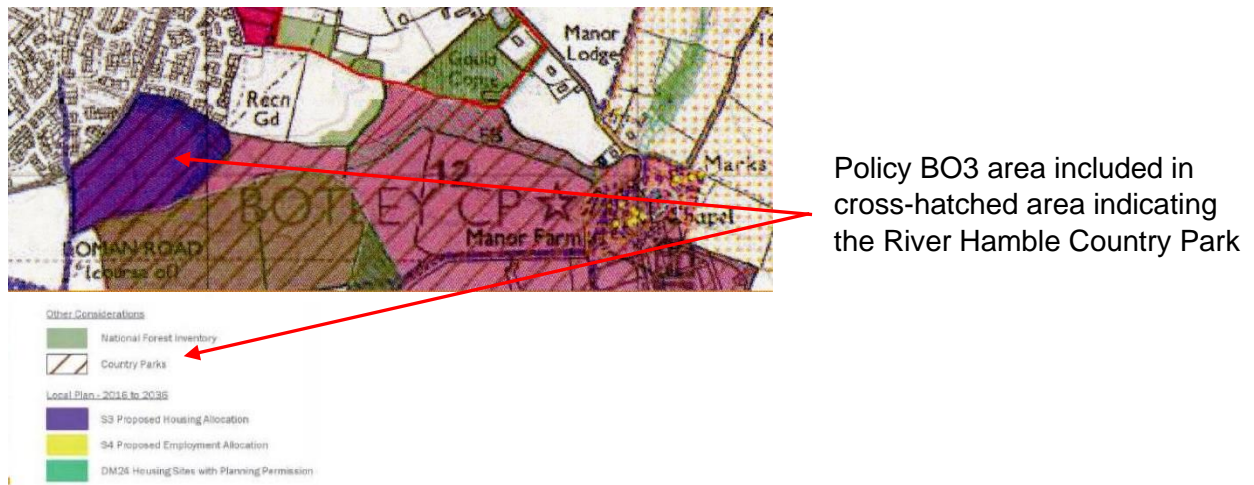
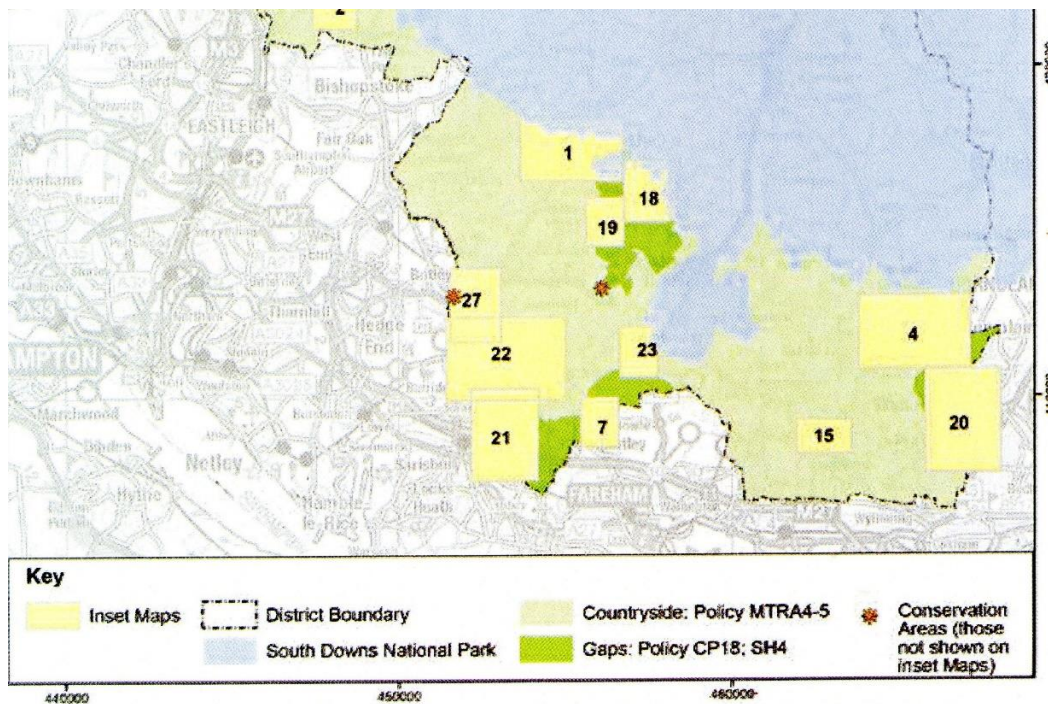
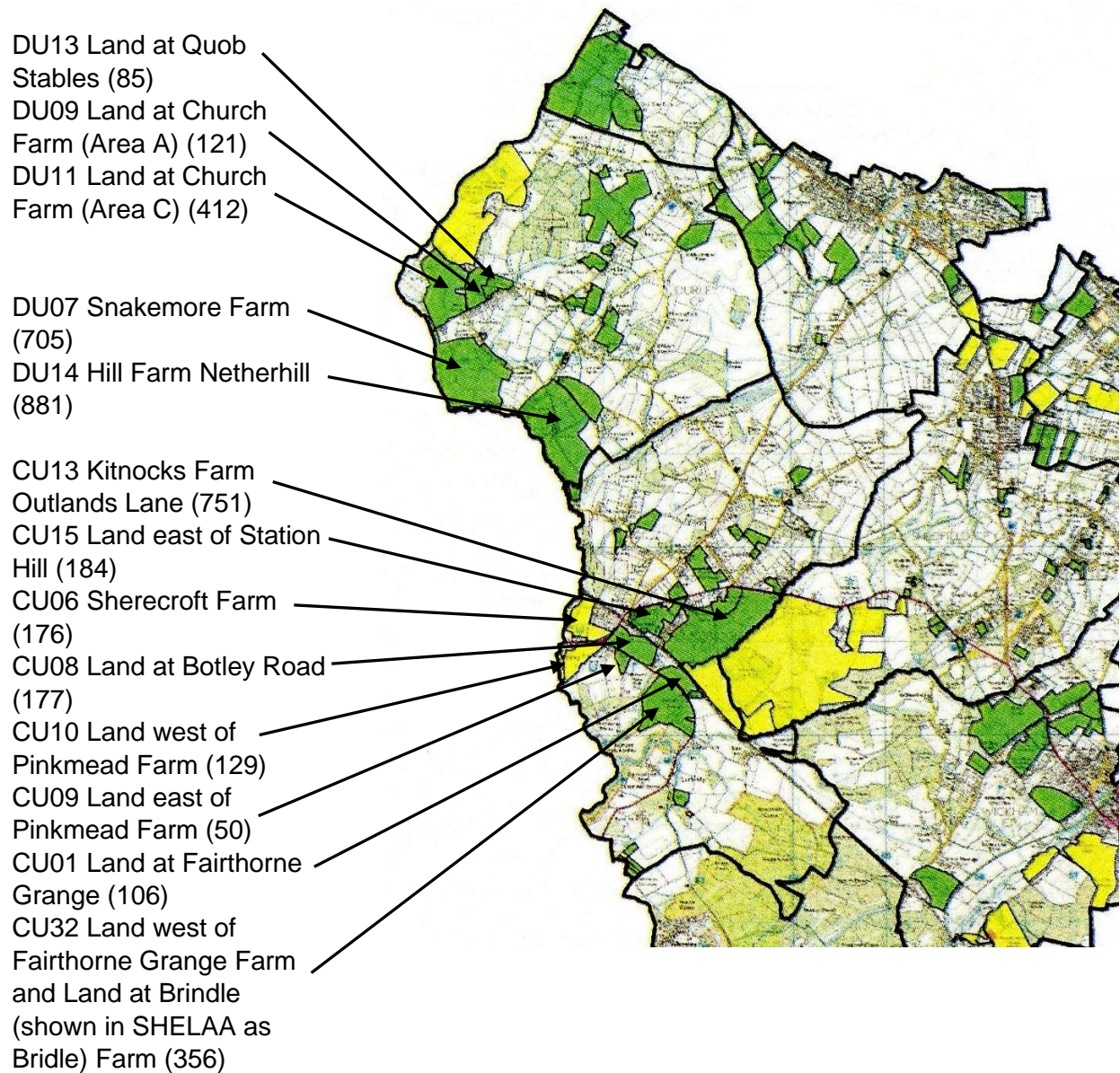


Figure 20 - South western part of Winchester City District abutting Botley Parish



Infrastructure Paper Appendix

Figure 21 - Winchester City Strategic Housing and Economic Land Availability Assessment 2020 for Durley Parish and Curdridge Parish (allocated dwelling number in brackets)



Infrastructure Paper Appendix

Figure 22 - Detail of area 27 in Figure 17 (allocated dwellings in brackets)

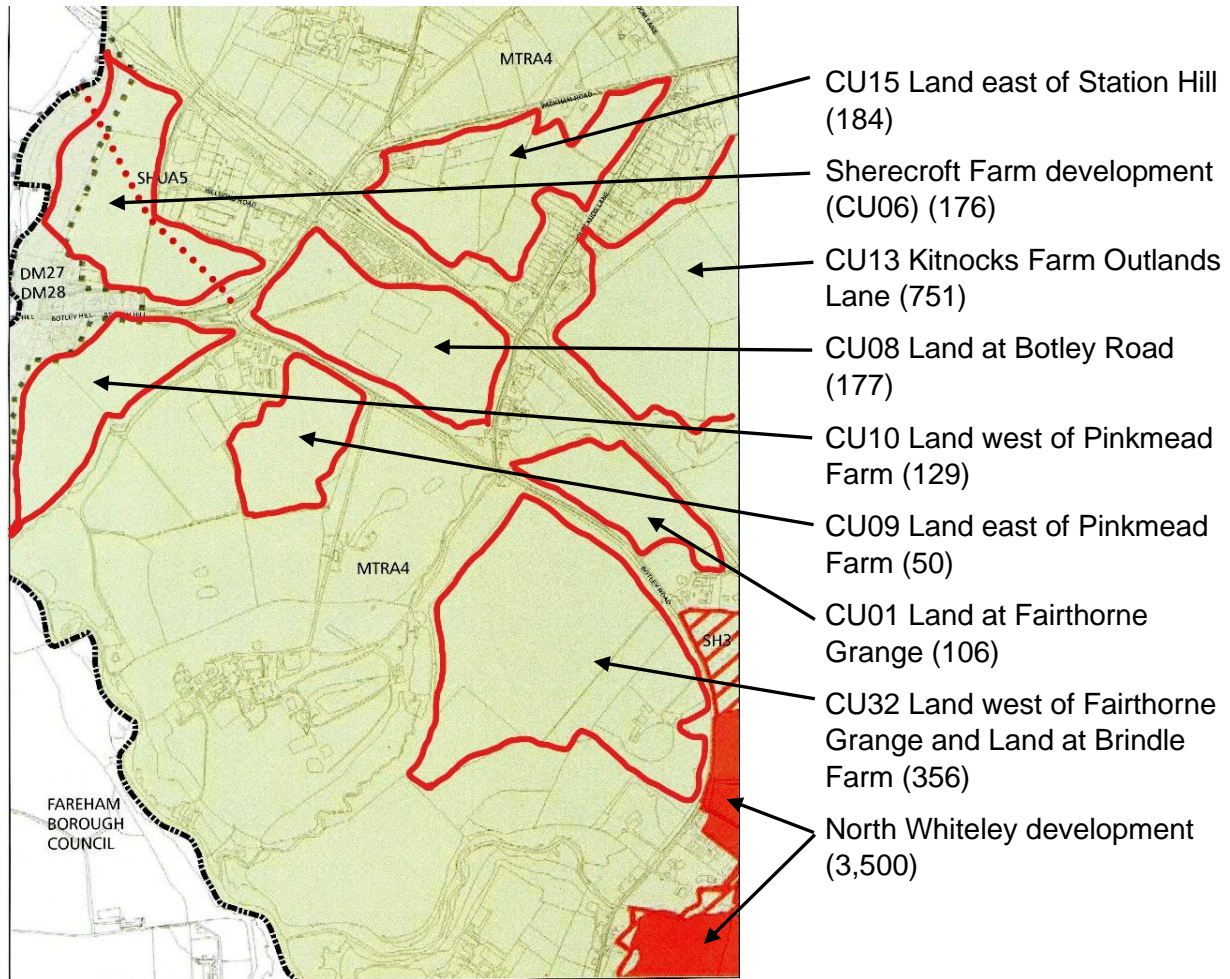
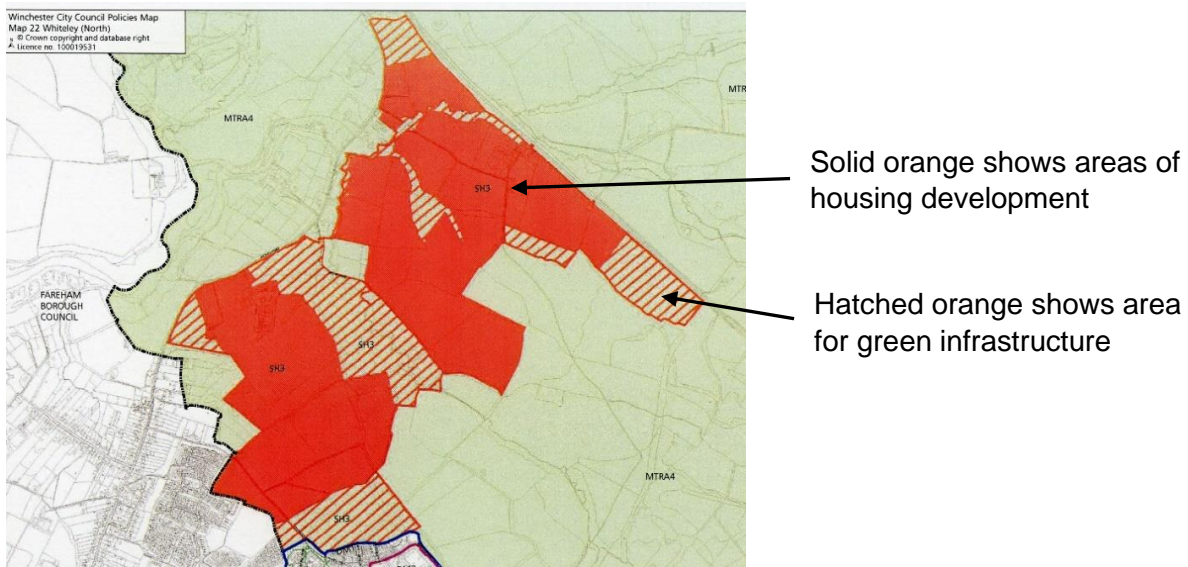


Figure 23 - North Whiteley development (area 22 in Figure 17)



Infrastructure Paper Appendix

Figure 24 - LUC Report proposed open space quantity and accessibility standards.

Open Space Typology	Proposed Quantity Standard	Proposed Accessibility Standard
Children's Play Areas	0.052 hectares per 1,000 population	300 metres or 5 minute walk
Amenity Open Space	1.2 hectares per 1,000 population	300 metres
Play Space for Young People	0.022 hectares per 1,000 population	900 metres or 15 minute walk
Allotments	0.125 hectares per 1,000 population	900 metres

Figure 25 - Areas of open spaces covered by the Hedge End, West End and Botley Local Area Committee.

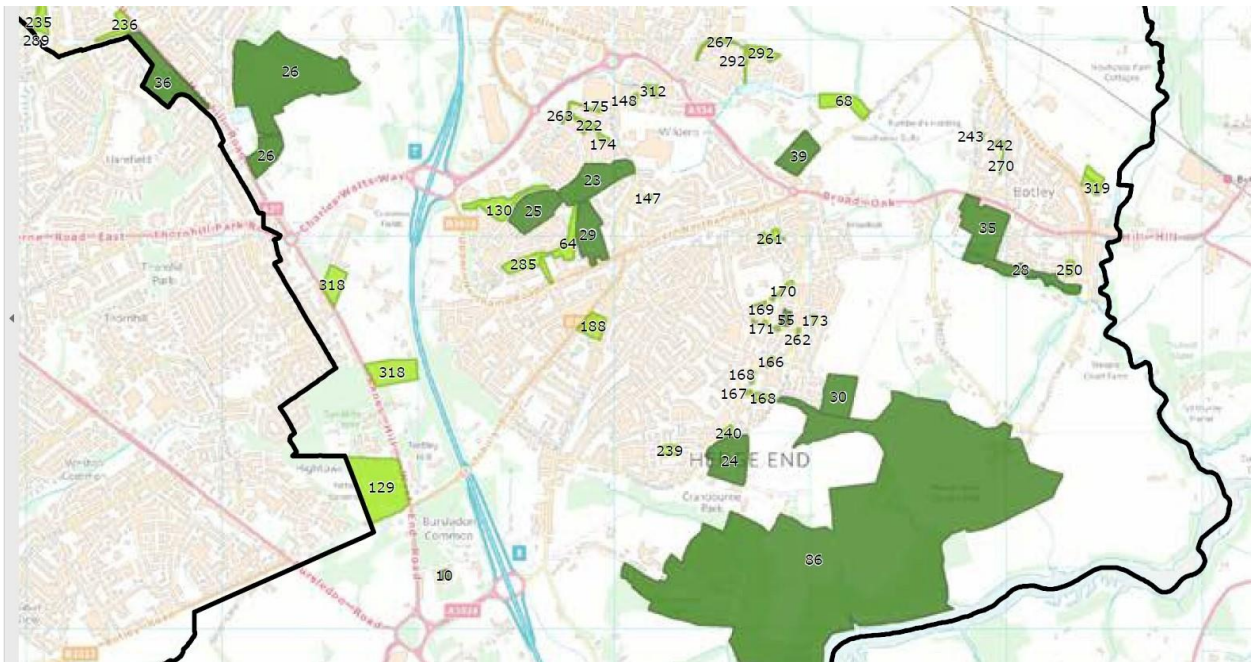
Primary typology	Area in hectares
Amenity space	63.8
Country Park	196.9
Green routes	36.5
Allotments	7.8

Infrastructure Paper Appendix

Figure 26 - Amenity (Open) Spaces in northern Botley from LUC Report Figure 2.1.2



Figure 27 - Amenity (Open) Spaces in southern Botley from LUC Report Figure 2.1.3



Infrastructure Paper Appendix

Figure 28 - Duke Road (1) and Paxton Close (2)

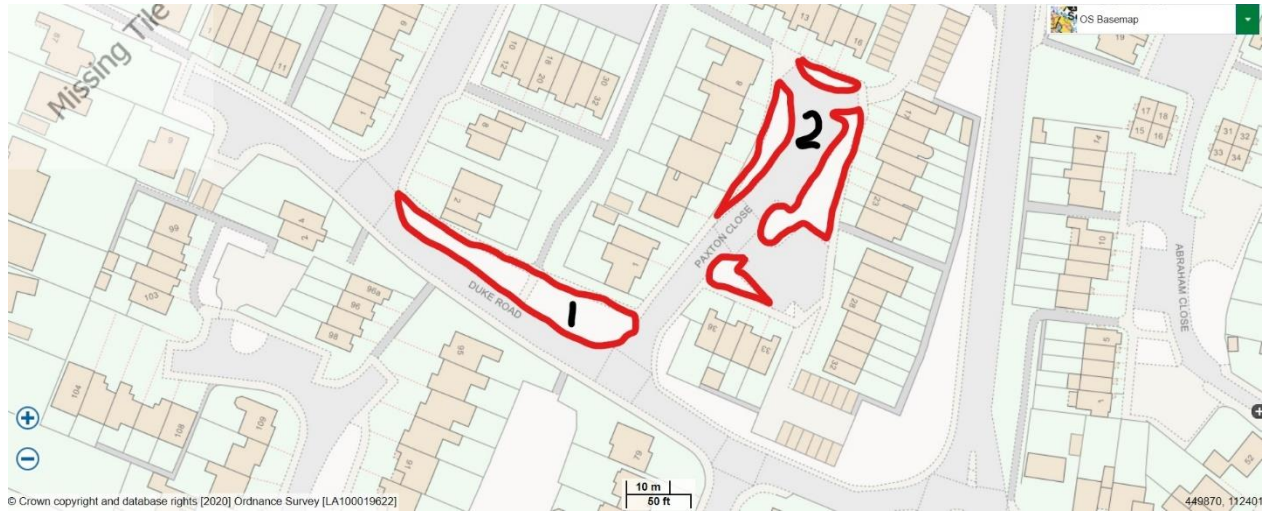


Figure 29 - Ferndale



Infrastructure Paper Appendix

Figure 30 - Havendale (1) and (2)



Infrastructure Paper Appendix

Figure 31- Kings Copse Avenue/Marls Road

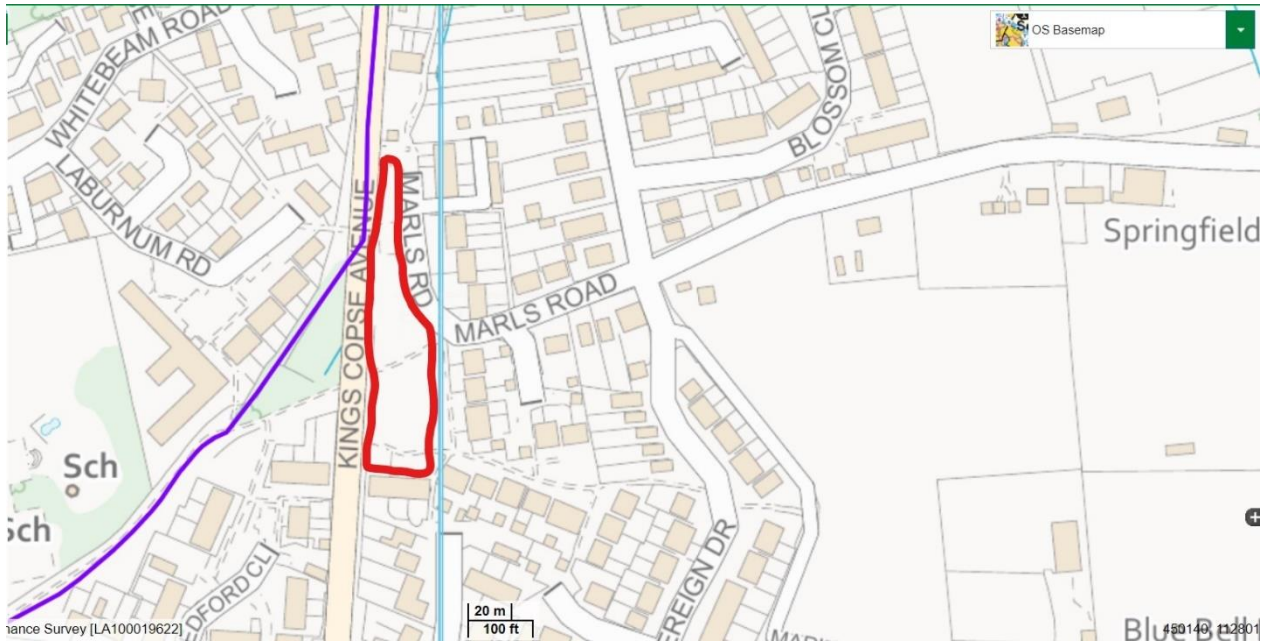


Figure 32 - Berry Close (1) and (2)



Infrastructure Paper Appendix

Figure 33 - Crusader Road (1) and (2)



Figure 34 - Precosa Road



Infrastructure Paper Appendix

Figure 35 - Chestnut Walk (1), Holmesland Drive (2), Sycamore Walk (3) and Amberley Close (4)



Figure 36 - Falcon Way



Infrastructure Paper Appendix

Figure 37 - Four Acre (1) and Botley Parish Quay (2)

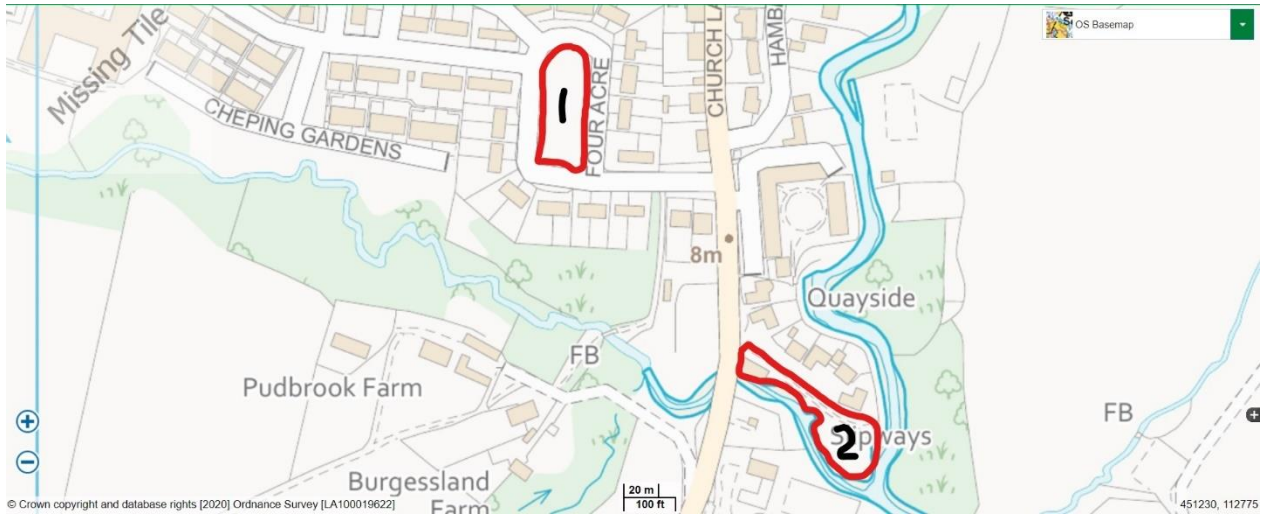


Figure 38 - Sengana Close (1) and (2)

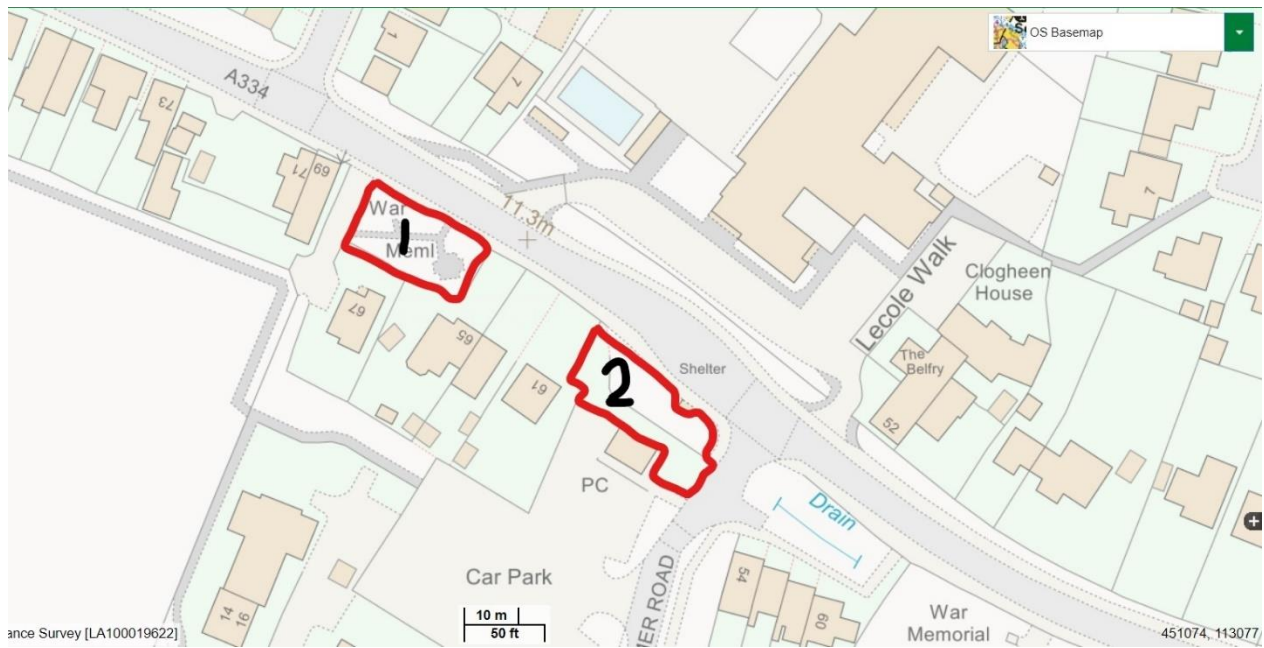


Infrastructure Paper Appendix

Figure 39 - Jenkyns Close



Figure 40 - Nurseland (1) and Mortimer Road (2)



Infrastructure Paper Appendix

Figure 41 - All Saints Churchyard (1 is Diocesan land and 2 is Parish Council land)

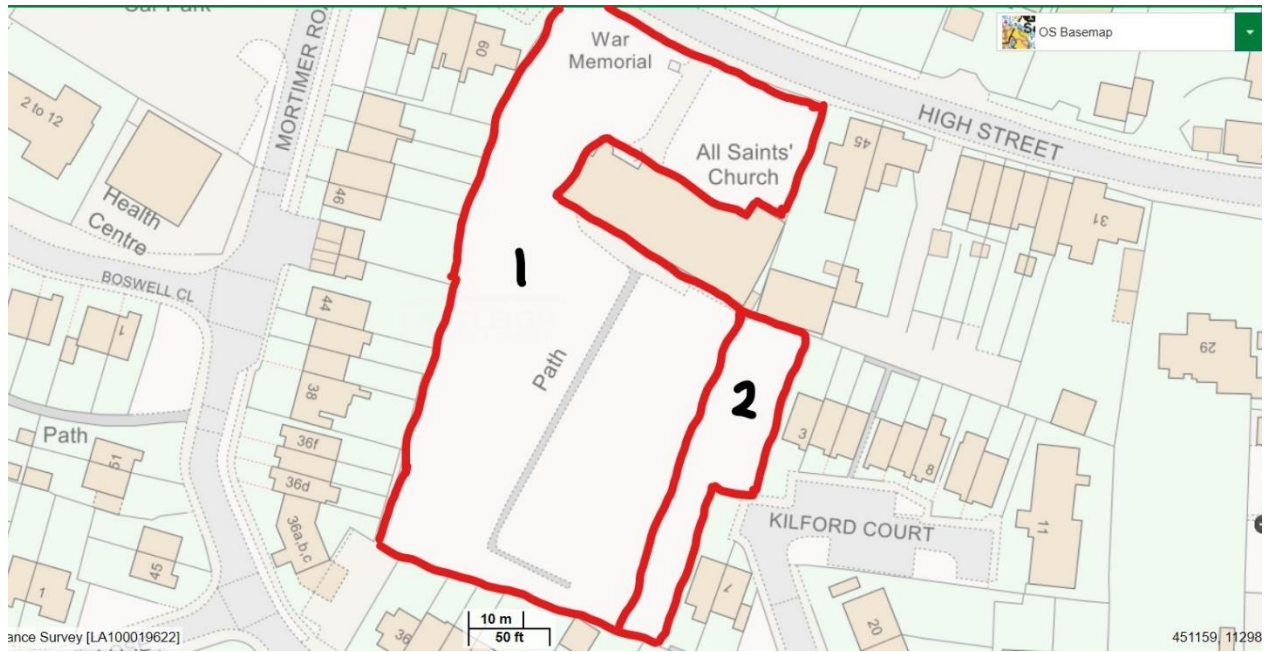


Figure 42 - Tickner Close



Infrastructure Paper Appendix

Figure 43 - Woodhouse Lane after completion of Botley Bypass (shown in purple) with existing footpath (shown in green)

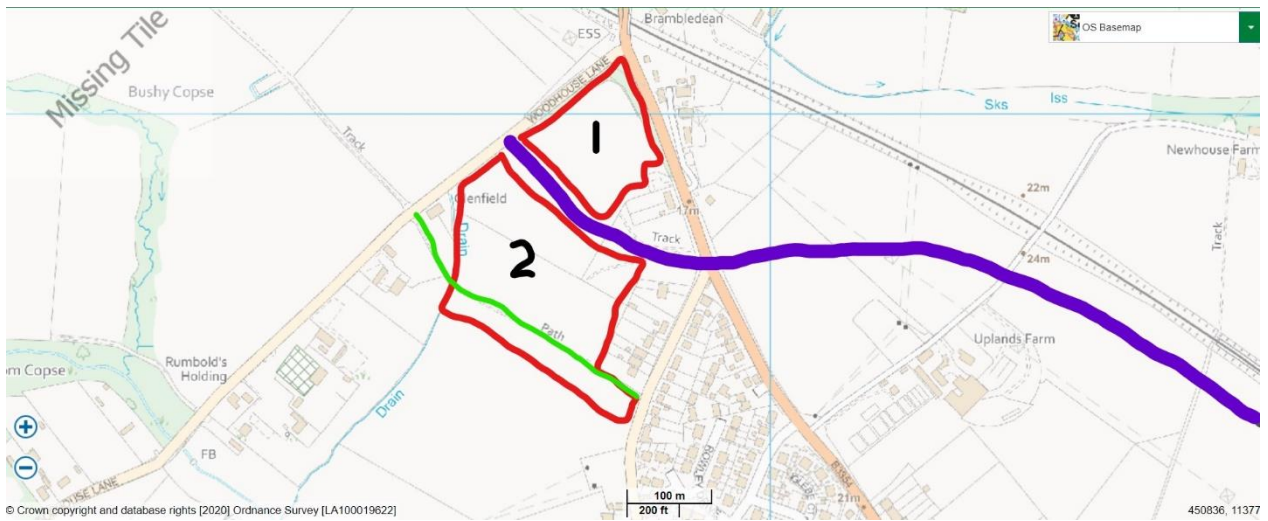


Figure 44 - Bull Close (Winchester Street) Allotments



Infrastructure Paper Appendix

Figure 45 - Boorley Park Allotments, Sports Field and MUGA/Children's Play Area

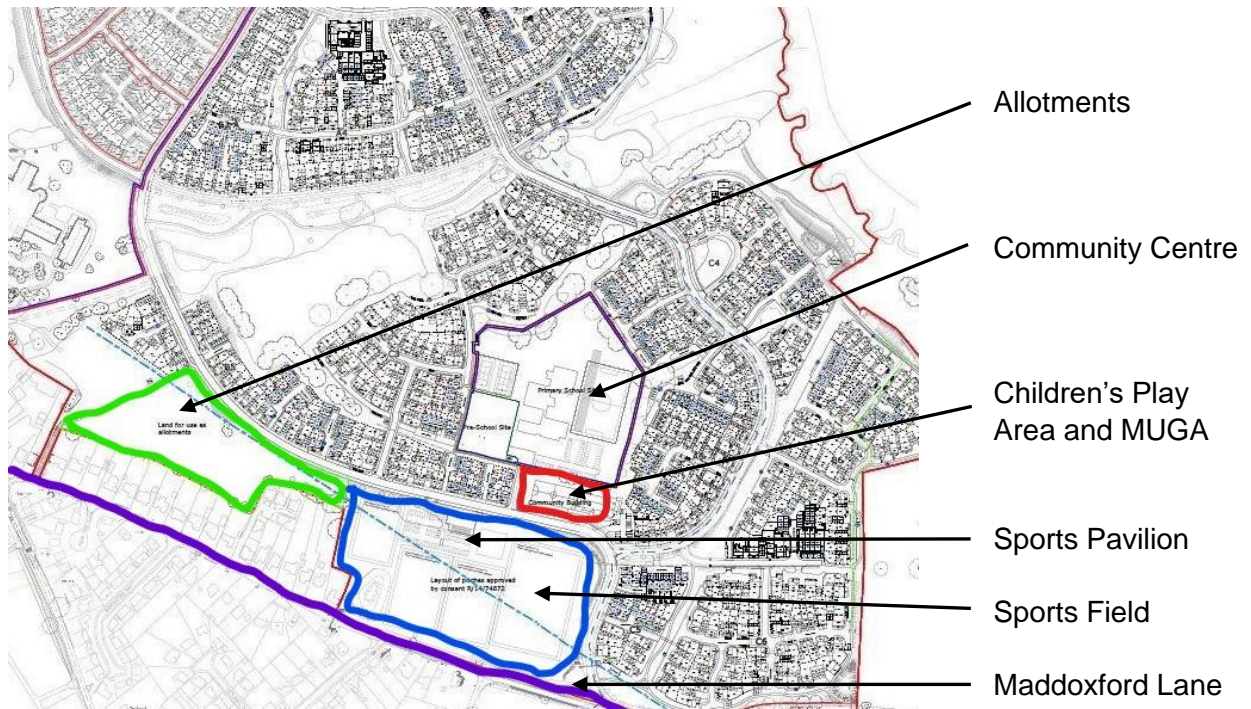
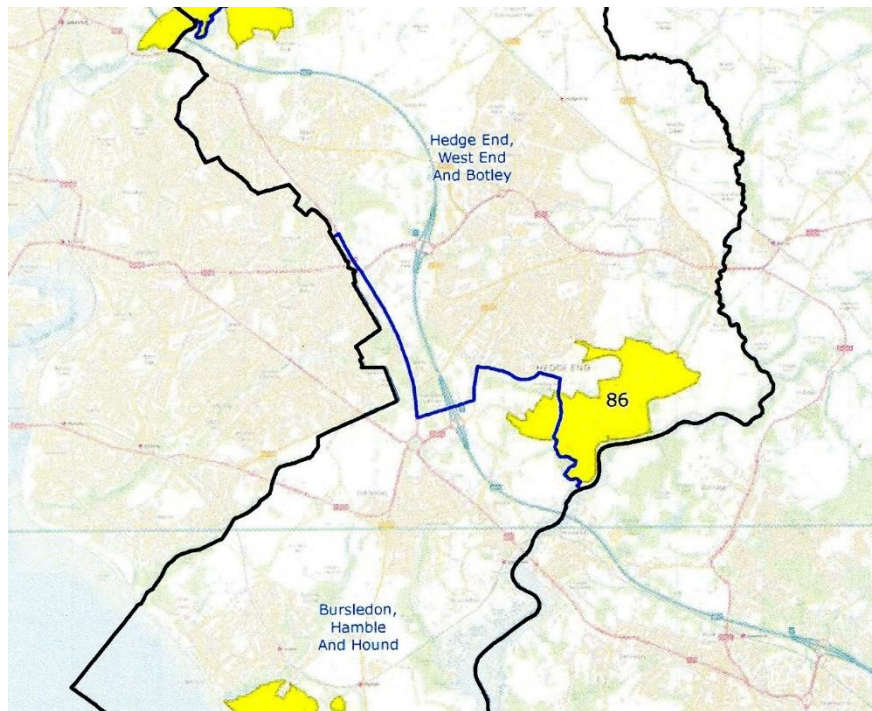


Figure 46 - River Hamble Country Park (area 86)



Infrastructure Paper Appendix

Figure 47 - Green routes

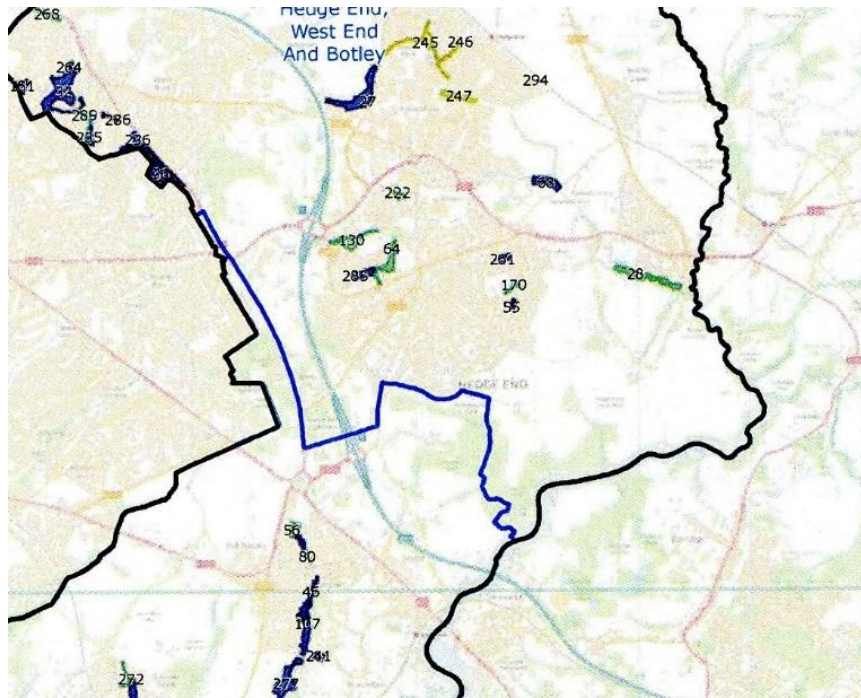
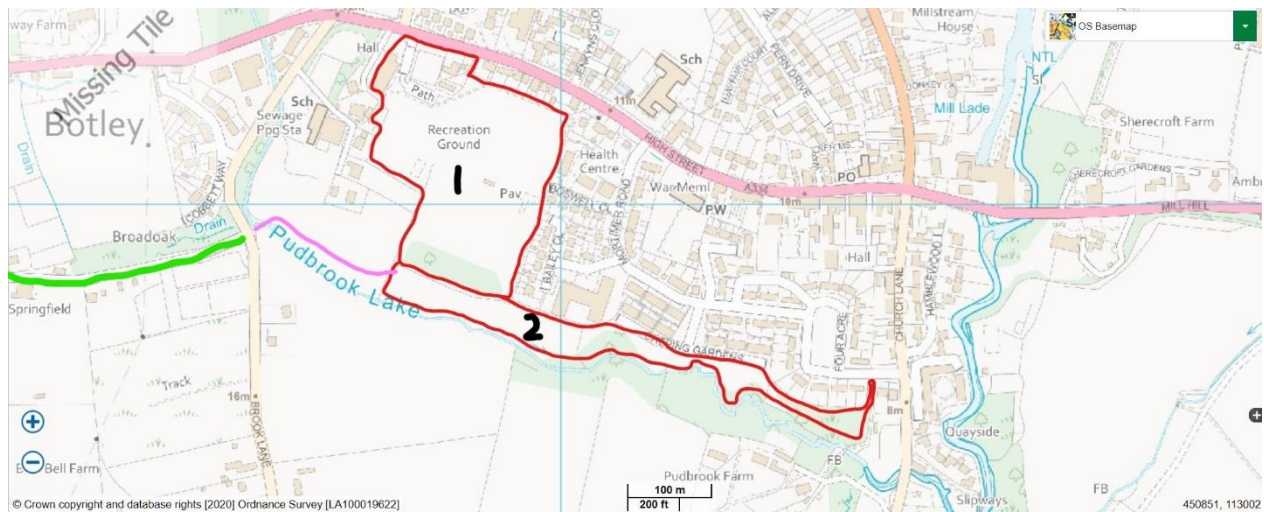


Figure 48 - Botley High Street Recreation Ground (1) and Pudbrock Lake Green Route (2) with Bridleway 17 (in green) and possible route of additional footpath (in purple)



Infrastructure Paper Appendix

Figure 46 - Noble Road



Figure 50 - Bedford Close



Infrastructure Paper Appendix

Figure 51 - Footpath linking Jenkyns Close to Winchester Street and adjacent land behind Maffey Court (1) (Jenkyns Close Amenity Space 2, see 6.11m and Figure 20)

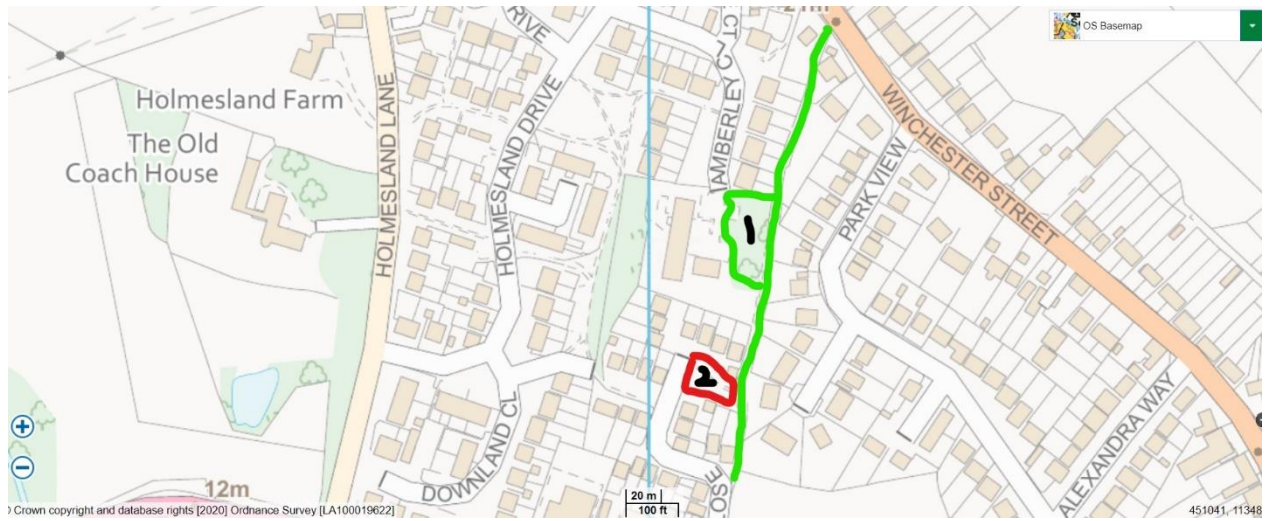


Figure 52 - Little Hatts Recreation Ground



Infrastructure Paper Appendix

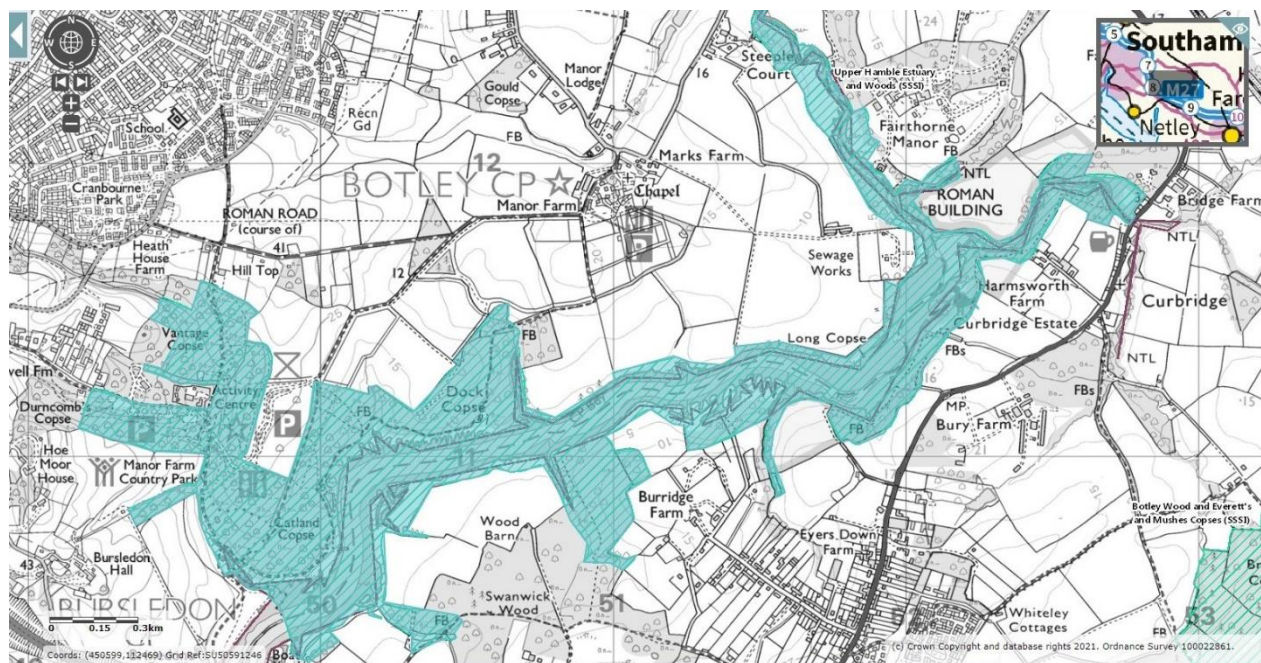
Figure 53 - Selected Priorities from the Botley Community & Infrastructure Priorities list 2019-2024 drawn up by the Hedge End, West End & Botley Local Area Committee of Eastleigh Borough Council

Project	Location		Priority	Estimated funding required
	Proposal	Justification/comment		
B2	Entrance to Lovers Lane and Four Acres			
		Upgrade entrance area and signage	M	£11,300
		Footway improvements. Shared project with Hampshire County Council.	M	£7,000
B4(A)	Botley Centre - car park			
		Extend current car park by minimum of 8 spaces, resurface and mark out bays	H	£40,000
		Car parking capacity under considerable pressure due to extensive community use. Park & Stride facility		
B4(B)i	Mortimer Road - car park			
		Improve aspect to front onto High Street gateway, improve fencing and landscape scheme. Includes dropped curbs	H	£10,000
B4(B)ii	Mortimer Road - toilet block			
		Demolish and create extra car parking spaces	M	£65,000
B5	Botley Centre All Weather Pitches			
		Surface replacement of Multi-User Games Area.	M	£50,000
B7	Dual use pavilion for cricket and football - Botley Recreation Ground			
		New pavilion/store/lounge/kitchen and scoreboard.	M	£300,000
B13	Mortimer Road/High Street corner			
		Enhanced landscape scheme in consultation with residents, for example heritage style railings, shrub beds, boxed hedging	M	£16,000
B14	Pudbrook open space with potential Western link to Brook Lane			
		Develop footpath routes up to Lovers Lane.	H	£20,000
		Interpretive panels/new signage/kissing gates and new footpath required due to erosion by nearby stream	H	£18,000
		Enlarged pond	H	£3,500
		Link to Brook Lane and secure open space.	H	£12,000
B15	Holmesland area and Maffey Court			
		Improve and fence open space areas	H	£12,000
B16	Botley Recreation Ground			
		Informal wooden play trail	M	£9,000
		Fully refurbish play area 2027	M	£60,000
B18	Holmesland Open Spaces			
		Improve landscaping, upgrade key routes, improve fencing and /pathways	M	£18,000

Infrastructure Paper Appendix

B19	Little Hatts Recreation Ground		
	Upgrade youth zone/football unit with new youth shelter.	H	£31,000
	Renew play area and picnic area with seating and signage.	H	£75,000
	Footpath extensions with bridge and kissing gates to River Hamble Country Park.	H	£40,000
B23	Cemetery		
	Cemetery extension required. Capacity circa 180 + cremation plots to be clarified reflecting population growth	H	To be costed
B25	Botley Mills		
	Support preservation and fully utilise potential of the Mills as an employment and trading hub with a pedestrian link to Village centre. Requires commercial partnerships.	H/M	To be costed
B27	Car parking around the Square		
	Conduct a feasibility study into the future design of car parking provision in the Square after completion of the Botley Bypass.	H	To be costed
B29	Footbridge over railway line between Deer Park and Boorley Gardens		
	To construct a footbridge over the railway which runs between Botley and Hedge End stations. To provide safe pedestrian access between the two developments particularly important for children attending the new Deer Park School.	H	To be costed

Figure 54 - Site of Special Scientific Interest (Upper Hamble Estuary & Woods)



Infrastructure Paper Appendix

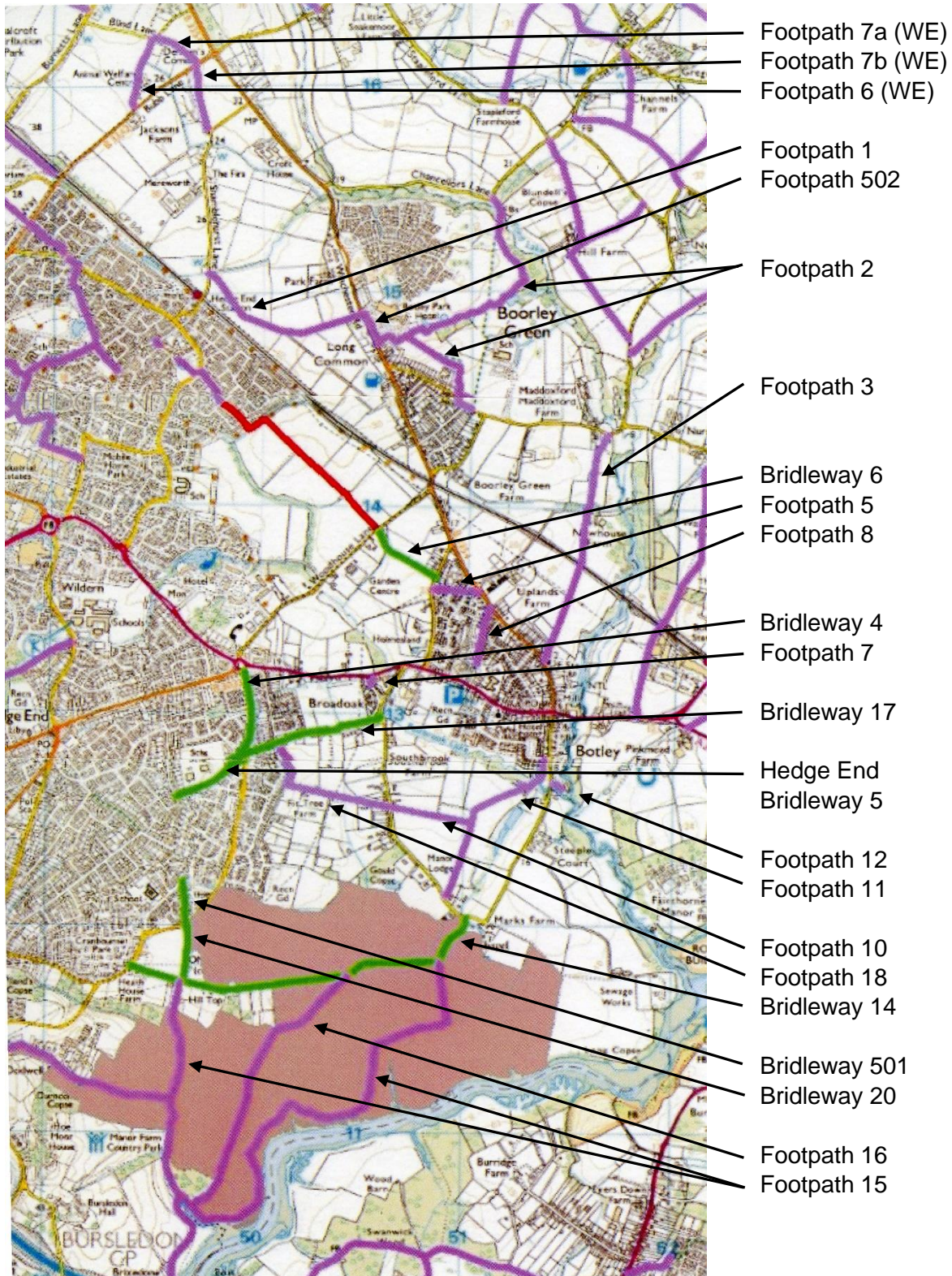
Figure 55 - Sites of Importance for Nature Conservation

SINCs in Botley Parish				
Grid reference	SINC Ref	Name	Criteria	Hectares
SU50231574	EA0115	Alder Strip	1A/1Cii	1.31
SU50901542	EA0124	Botley Golf Course Wood ⁽¹⁾	1A/1Cii/5B	5.87
SU51701350	EA0131	Botley Mill Woodland	1C(ii)	0.68
SU50901480	EA0123	Botley Park Wood	1A/B	1.02
SU51161242	EA0125	Church Lane Meadows	2B/5B/1Cii	1.93
SU50401170	EA0117	Dockdell Copse	1A	1.75
SU51401490	EA0129	Golf Course Meadow & Swamp	2B/5B	0.46
SU50601220	EA0121	Gould Copse	1A	3.06
SU51701430	EA0134	Holly Tree Farm Meadow	2B/5B	0.80
SU51701420	EA0133	Holly Tree Farm Wood	1A/1C(ii)	0.67
SU50201160	EA0112	Kings Copse Meadow and Pond	2B/5B	3.75
SU51501470	EA0130	Maddoxford Farm Meadows	5B	2.41
SU50621211	EA0150	Manor Farm Meadow (Central field)	5B	27.86
SU50701140	EA0122	Manor Farm Plantation	1B	2.23
SU51701410	EA0132	Marshy Grassland, Botley	5B	1.37
SU51401400	EA0128	Newhouse Farm Woodland & Swamp	1C(ii)/5B	1.35
SU51051280	EA0139	Pudbrook Lake	1B/8A	32.42
SU49701660	EA0105	Scorey's Copse	1A	3.60
SU49801660	EA0107	Scorey's Copse Rush Pasture	2B/5B	2.64
SU50001210	EA0109	Tanhouse Meadow	2D/5B	1.51
SU50551330	EA0120	Woodhouse Gully Wood	1A/1C(ii)	1.62
SINCs in the Winchester District abutting Botley Parish boundary				
Grid reference	SINC Ref	Name	Criteria	Hectares
SU50601550	WC0129	Ford Lake Meadow B	2A	0.46
SU51301500	WC0132	Ford Lake Meadow A	2A	0.39
SU50921545	WC0139	Ford Lake Meadow	2A/5B	1.41
SU51761412	WC0147	Meadow west of Wangfield Copse	2A	1.47
SU51801390	WC0148	Wangfield Copse	1A	8.24

(1) = EA0129 Golf Course Meadow and Swamp was deleted in 2012 but the area is now included in EA0124 Botley Golf Course Wood

Infrastructure Paper Appendix

Figure 56 - HCC Definitive Map (2008) (footpaths in purple, temporarily closed footpaths (now open) in red, bridleways in green) (numbers relate to Figure 54) (WE = footpaths moved from West End Parish to Botley Parish)



Infrastructure Paper Appendix

Figure 57 - Hampshire County Council Definitive Statement of Public Rights of Way (2008)
(Statutory Statement and additional under separate Order in 2018)

Path number	Start point grid reference	End point grid reference	Description
Footpath 1	Shamblehurst Lane 4974 1509	Winchester Road 5047 1489	From C56 south eastwards along 3 metres wide earth track enclosed about 6.1 metres wide between hedges to A3051 south of Braxells Farm.
Footpath 2	Maddoxford Lane 5101 1448	Durley Footpath 28 at Parish Boundary 5114 1536	From U168 over stile, northwards along verge of pasture, over stile along track on verge pasture, over stile, along headland of arable field, over slip rails, westwards along verge of arable field, over stile, then northwards across pasture, over slip rails, across pasture, through field gate, along earth path, through field gate, across small pasture and over footbridge at Parish Boundary.
Footpath 3	Maddoxford Lane 5166 1436	Winchester Street 5137 1327	From U168 at Maddoxford Farm through field gate, southwards along grass track about 2.7 metres wide across pasture and on headland of arable field, then unenclosed between arable fields through gap and along cinder path through copse, crossing road to Newhouse Farm, along grass track unenclosed between arable fields, under railway arch, then along grass and gravel track, about 3 metres wide unenclosed between arable fields to A3051.
Bridleway 4	Road B3033 at Broad Oak 4993 1320	Botley Bridleway 17 4990 1278	From A334 southwards along track enclosed about 6.1 metres wide between fences, through field gate and along grass track to Parish Boundary.
Footpath 5	Winchester Street 5105 1359	Holmesland Lane 5084 1360	From A3051 over stile, westwards along grass track about 2.4 metres wide unenclosed between arable fields, over stile and along gravel track to U168. Parts of the path between 5091 1360 and 5105 1359 have been diverted and parts have been reduced to about 1.8 metres wide.
Bridleway 6	Holmesland Lane 5084 1366	Woodhouse Lane 5057 1388	From U168 north westwards along 3 metres wide farm track unenclosed between arable fields to C195 at Woodhouse Farm.
Footpath 7	Cobbett Way 5054 1314	Road B3033 at Broad Oak 5055 1317	2 metres wide between 5054 1314 and 5055 1316 and 1.5 metres wide between 5055 1316 and 5055 1317
Footpath 8	Winchester Street 5111 1351	Jenkyns Close 5105 1324	From A3051 through gap, southwards along gravel path enclosed about 1.2 metres wide between hedges through kissing gate, along grass path, then along 2.7 metres wide

Infrastructure Paper Appendix

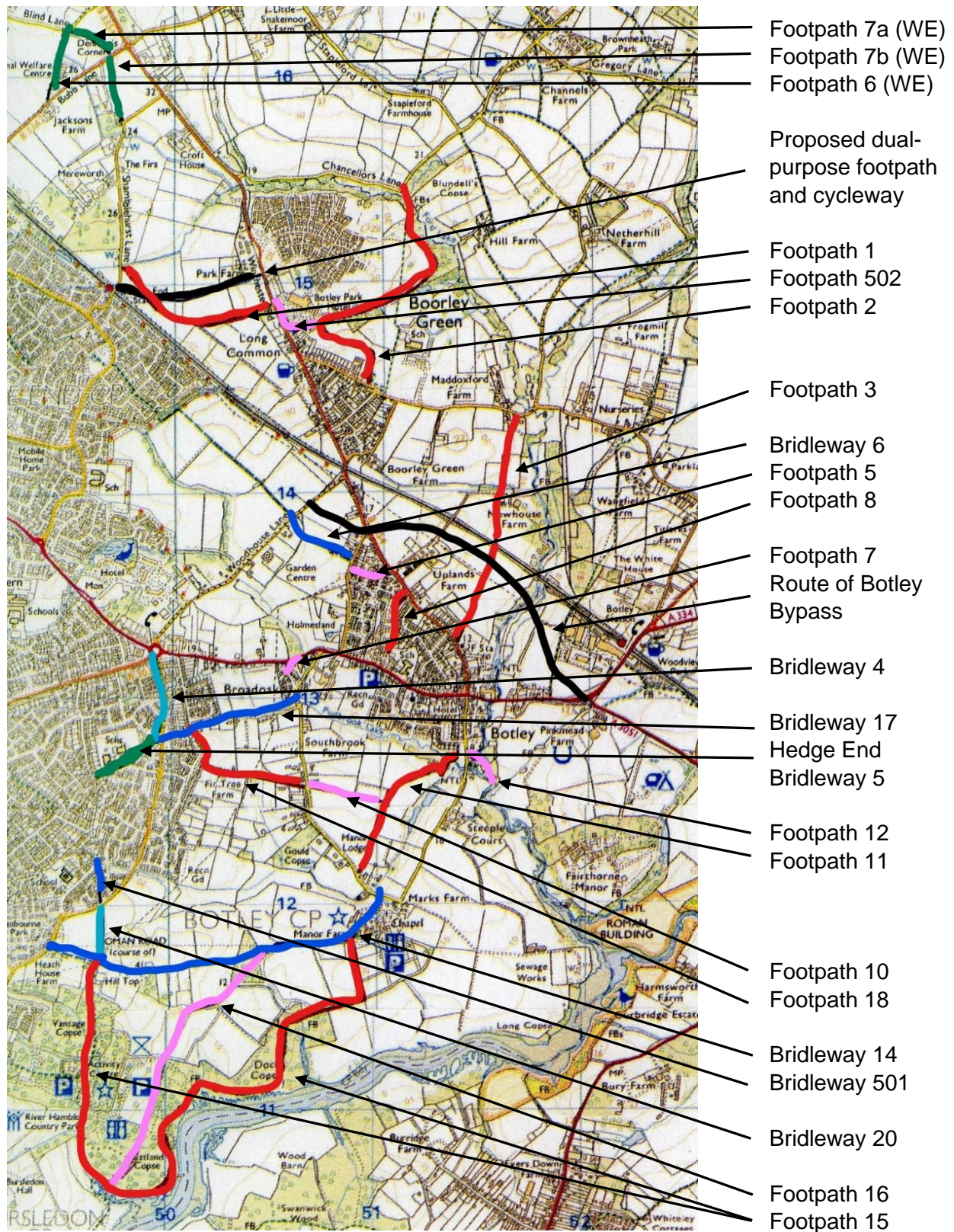
			gravel drive and through wicket gate into A334. The path follows a diverted route between 5105 1324 and 5106 1329. That part of the path which runs between 5105 1324 and 5101 1315 has been removed from the Definitive Map as it is at the side of a public road.
Footpath 10	Brook Lane 5066 1257	Botley Footpath 11 5104 1249	From Road U.168 at Wild Grounds to Junction with No. 11. From U168 south eastwards along 2.7 metres wide unmetalled farm track, then along grass track about 1.8 metres wide to junction with Botley Footpath 11.
Footpath 11	Four Acre 5138 1279	Brook Lane 5092 1214	From U168 westwards and southwards along metalled track about 2.7 metres wide, through kissing gate, south westwards along grass track about 1.8 metres wide, over bar fence at junction with Botley Footpath 10, along grass track, through kissing gate, along grass path about 0.6 metres wide and through field gate onto U168 at the Old Rectory. The path follows a diverted route between 5128 1266 and 5130 1267 and is 2.5 metres wide between 5128 1266 and 5130 1267
Footpath 12	Church Lane 5143 1269	Parish Quay at Parish Boundary 5146 1266	From U168 eastwards along grass track enclosed about 2.7 metres wide between hedge and barn to Parish Quay.
Bridleway 14	5102 1204 Brook Lane	Botley Bridleway 20 Tanhouse Lane 4966 1173	From U168 north of All Saints Church south westwards along gravel road to Manor Farm, then along earth track enclosed between hedges, through Dockdell Copse, and westwards to junction with Botley Bridleway 17 at Parish Boundary.
Footpath 15	Botley Bridleway 14 5089 1182	Botley Footpath 16 4972 1064	From Botley Bridleway 14 west of All Saints Church, through field gate, southwards along grass track about 2.4 metres wide, through field gate south westwards along verge of pasture, over bar fence, then along 2.4 metres wide track, unenclosed through Dock Copse to junction with Botley Footpath 16 at Catland Copse. The path follows a diverted route between 5014 1108 and 5058 1128
Footpath 16	Botley Bridleway 14 5045 1175	Bursledon Footpath 15 at Parish Boundary 4972 1064	From Botley Bridleway 14 at Dockdell Copse, south westwards along 2.7 metres wide earth track enclosed about 4.6 metres wide between hedges, then unenclosed through Catland Copse to Bursledon Footpath 15 at Parish Boundary.

Infrastructure Paper Appendix

Bridleway 17	Brook Lane 5059 1299	Hedge End Bridleway 5 at Parish Boundary 4990 1278	From U168 Brook Lane south westwards along 3 metres wide gravel road enclosed between hedges about 6.1 metres apart and then along grass track to Hedge End Bridleway 5 at Parish Boundary.
Footpath 18	Brook Lane 5065 1257	Botley Bridleway 17 at Marls Road 5010 1285	From U168 Brook Lane westwards along grass track about 3.7 metres wide then northwards and north-westwards along 2.7 metres wide gravel track to junction with Botley Bridleway 17 at Marls Road.
Bridleway 20	Kings Copse Avenue 4967 1202	Botley Bridleway 14 4966 1172	From Tanhouse Lane southwards along metalled track 3 metres wide enclosed between hedges to Botley Bridleway 14 at Parish Boundary.
Bridleway 501	Havendale 4966 1221	Kings Copse Avenue 4968 1203	
Footpath 502	Footpath 2 5070 1479	Footpath 1 5047 1489	From Footpath 2 then parallel to Winchester Road to Footpath 1. Path created under 2018 Order that diverted Footpath 2 Botley. Not included in Definitive Map Statement of 01 January 2008.
West End 6 Footpath	Bubb Lane 4938 1590	Blind Lane 4947 1623	<i>Area transferred to Botley Parish in 2018. From C42 opposite Jackson Farm to U169. From C42 to field gate, northwards along verge of pasture, over bar fence, along verge of pasture and through gap on to U169. A house has been built over the course of the north end of this footpath and a non-legally sanctioned diversion of the footpath to the east of the house is in place.</i>
West End 7a Footpath	Blind Lane 4949 1623	Bubb Lane 4969 1612	<i>Area transferred to Botley Parish in 2018. From U169 to C56 at Parish boundary.</i>
West End 7b Footpath	Bubb Lane 4969 1610	Shamblehurst Lane 4974 1579	<i>Area transferred to Botley Parish in 2018. From U169 through gap, south eastwards along headland of arable field and across field, through gap, crossing C42, through field gate, then southwards across arable field, over iron fence, then along 2.7 metre wide earth track and through field gate to Road C56.</i>

Infrastructure Paper Appendix

Figure 58 - Footpaths and Bridleways (numbers relate to Figure 54) (WE = footpaths moved from West End Parish to Botley Parish)



Infrastructure Paper Appendix

Figure 59 - Submission from the Eastleigh Ramblers to the Botley Neighbourhood Plan Committee on 15 May 2019

1	A written submission, shown in full below, was presented by Richard Kenchington, Footpath Secretary of the Eastleigh Ramblers, and he spoke about the key features of the submission.
2	The historical network of countryside rights of way is being continuously eroded as more urban development takes place. There needs therefore first for general policies that try and retain what exists in an attractive environment so that they continue to have recreational value despite their urbanised setting.
3	The Parish has the great advantage of the River Hamble Country Park to the south but there is nothing equivalent to the north west, north or east of the village. There therefore should be policies to acquire the lands in the Hamble Valley as circumstances arise and in conjunction with Curdrige and Durley Parish Council's to create a new linear public park, as well as preserving the green corridor for conservation reasons.
4	In addition, there is a need to ensure that the developments south of the railway line have access to parkland and there should be specific policies to provide for the purchase and development of land for open space between Holmesland Lane and Woodhouse Lane and north of the railway line around Newhouse Farm.
5	Within this strategic parkland open space there should be a deliberate attempt to create new semi-rural pathways forming circular routes and linking settlement areas to provide a good rights of way network and avoid Botley giving the appearance of being devoid of countryside and forcing residents to get in their cars to go and find somewhere to have a walk, exercise the dog, or have leisure time with the kids.
6	There should be an in depth look at the lands already in Parish and Borough ownership to establish whether there are routes which can be created or already exist which can be dedicated as rights of way to add to the Definitive Map.
7	There should be research into those paths that exist and recorded on the Index of Publicly Maintainable Streets that could usefully be added to the Definitive Map and a Policy to exploit opportunities to make the Definitive Map more complete.
8	There should be a specific policy to retain Footpath Number 1 Botley as a recreational and transport link giving the appearance of a green lane. The applications approved so far show its retention but there should be a policy to enhance it and ensure the quality of this recreational route is maintained.
9	Footpath Number 2 Botley is the subject of a confirmed Diversion Order, which has not been implemented to date on the ground. The diversion routes will link Durley with Maddoxford Lane and Footpath Number 1 Botley and because of the proximity to lakes and Ford Lake will create better routes for recreation than existed when it was necessary to cross a number of fairways of a golf course. There should be a policy to ensure the completion of the works and to bring the areas that give the routes their attractiveness into Parish ownership.
10	Footpath Number 3 Botley is being preserved in the current proposals put forward by Hampshire County Council but when they sell off the land there will another developer involved. There should be policies that adopt the same principles as are recited in the outline planning application.

11	The developments at Boorley Green and along Maddoxford Lane are boxing in the opportunities to connect Botley with the countryside to the north and east and the proposals for the Botley to Bishop's Waltham Trail need to be set out as a policy objective. We have yet to see whether our representations made in connection with the application for the development east of Winchester Street are going to be effective. There has been a campaign by the user groups to ensure that the route from the Botley Bypass to Maddoxford Lane is implemented as part of that development.
12	At the very localised level there are small areas of woods and watercourse valleys which have the potential to add to the overall picture. Those areas should be identified, brought into public ownership and preserved. One example is the area at the eastern end of Marls Lane west of its junction with Brook Lane. Bridleway 17 on the Definitive Map runs along an overgrown track north of the watercourse. There should be a policy to open it up again and to make the valley between it and Marls Lane public open space.
13	There should be a general policy to attempt to provide, when the opportunity arises, rights of way to enable access to the River Hamble east of Manor Farm and the River Hamble Country Park and south-east of Church Lane.

Figure 60 - Survey of the Rights of Way in Botley Parish by the Eastleigh Ramblers in June 2020 (non-statutory statement)

SURVEY OF THE RIGHTS OF WAY RECORDED ON THE DEFINITIVE MAP IN THE PARISH OF BOTLEY AS AT 30 JUNE 2020

Desktop study - Richard Kenchington

- Physical Survey - Key
- No Problem = Path easy to use
- Signing issue = Signposting required to be legal requirement
- Waymarking = Waymarking desirable to make easy to use
- Vegetation = Trees or undergrowth need clearing
- Obstruction = Definitive alignment illegally obstructed

The Parish boundary is as defined in the Eastleigh Borough Council (Reorganisation of Community Governance) Order 2018.
<https://www.eastleigh.gov.uk/council/general-public-information/community-governance-review/review-of-parish-councils-2017>

Footpath 1 Botley. No problem. CAMS Report 22029 to be checked. Unspecified problem reported 12 July 2018 - HCC Project 106.

Footpath 2 Botley. No problem. CAMS Report 29063 to be checked. Boardwalk problem reported 16 April 2020. As diverted by a 2018 Order. Note the section running parallel with Maddoxford Lane was constructed outside the limits of that road and therefore only has the status of footpath and should not be deleted from the Definitive Map. Part is subject to the temporary closure order see Figure A below. Not reflected in Definitive Map Statement of 1 January 2008.

Figure A - HCC notice of temporary closure of Footpath 2a Botley



TEMPORARY CLOSURE BOTLEY FOOTPATH 2a

NOTICE IS HEREBY GIVEN that Hampshire County Council has made an Order under Section 14(1)a of the Road Traffic Regulation Act 1984, to allow for works in connection with the housing development as follows:

ROAD TO BE CLOSED: Botley Footpath 2a

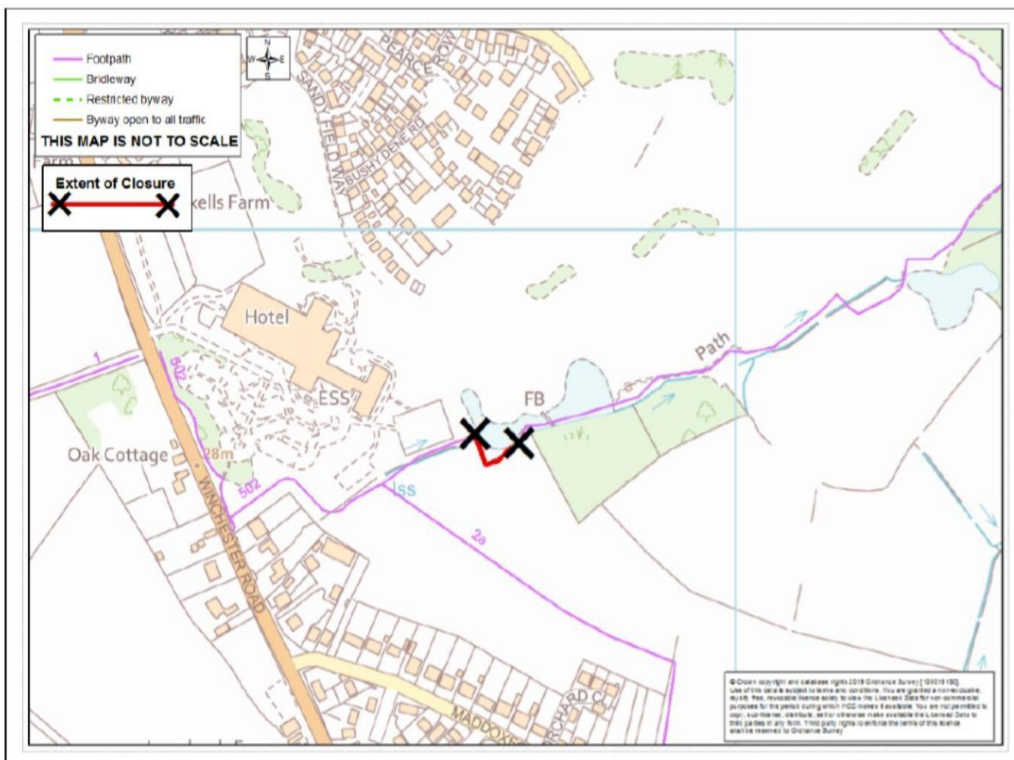
ALTERNATIVE ROUTE: An alternative route has been provided, please follow diversion signs on route.

PERIOD OF CLOSURE: From 08/06/2020 until 18/11/2020 or until completion of the works, whichever is sooner.

Reasonable facilities will be provided to allow access to adjacent premises while the work is being carried out.

For information visit www.hants.gov.uk/publicnotices, contact the Countryside Access Team on 0300 555 1391 or email countryside@hants.gov.uk

JONATHAN WOODS, Countryside Access Team Leader, Castle Avenue, Winchester, SO23 8UL



Infrastructure Paper Appendix

Footpath 3 Botley. No problem.

Bridleway 4 Botley. No problem. Most of this route is now part of Kings Copse Avenue, an adopted Class C Road, and therefore this part of the Bridleway should be deleted from the Definitive Map from the west side of Kings Copse Avenue northwards.

Footpath 5 Botley. No problem. The path has been split into three parts because of the adoption as unclassified roads of Rowley Drive and Holmesland Drive and these three parts need renumbering 5a, 5b and 5c.

Bridleway 6 Botley. No problem.

Footpath 7 Botley. No problem.

Footpath 8 Botley. No problem.

Footpath 9 Botley. Deleted from Definitive Map

Footpath 10 Botley. No problem.

Footpath 11 Botley. No problem.

Footpath 12 Botley. No problem.

Footpath 13 Botley. Extinguished in 1966.

Bridleway 14 Botley. No Problem.

Footpath 15 Botley. No problem.

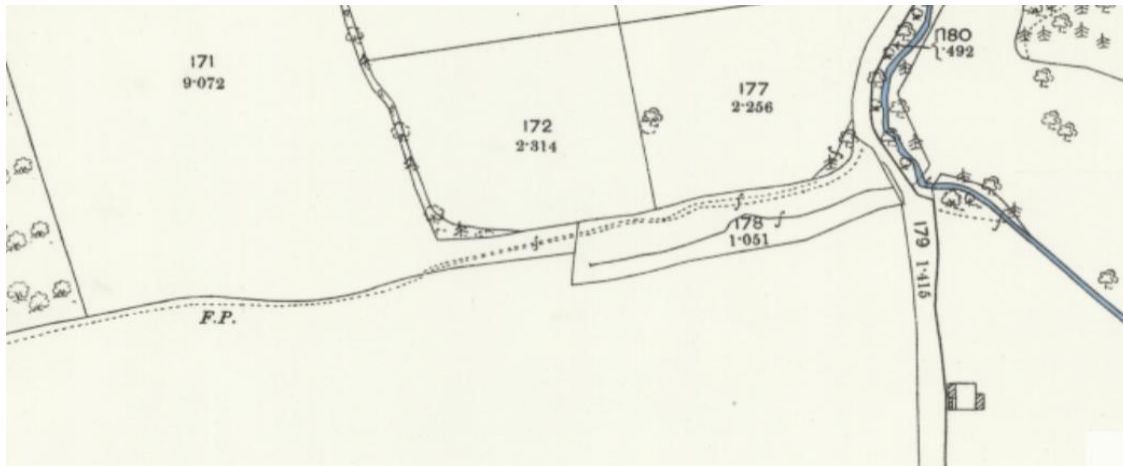
Footpath 16 Botley. No problem.

Bridleway 17 Botley. Obstructed. Eastern section from where it leaves a gravel road going east to Brook Lane is obstructed by a building and then vegetation. Needs reporting on CAMS. The Definitive alignment is shown on the extract from the 1888-1913 25" Ordnance Survey in Figure B below. The obstructed section needs to be downgraded to a footpath and for there to be a minor diversion to get around the building and the gravel road added as a bridleway which it is signposted as at the Brook Lane end. The wooded area between the two routes is an important piece of potential public open space. It is understood it is in County Council ownership and has never been used for anything.

A section is now within the adopted unclassified road called Marls Road (Spine) and should now be deleted from the Definitive Map. The mapping correctly excludes where it crosses Kings Copse Avenue (a Class C Road). The Bridleway should be recorded as 17a (from Botley Parish Boundary to Kings Copse Avenue) 17 b (from Kings Copse Avenue to Marls Road (Spine)) and 17c (from Marls Road (Spine) to Brook Lane).

Infrastructure Paper Appendix

Figure B - Extract from the 1888-1913 25" Ordnance Survey map



Footpath 18 Botley. No problem.

Footpath 19 Botley. Is now Footpath 719 Fair Oak and Horton Heath.

Bridleway 20 Botley. No problem.

Bridleway 501 Botley. No problem. CAMS Report 21940 - Obstruction reported 04 July 2018. CAMS Report 27117 - Nuisance reported 08 October 2019.

Footpath 502 Botley. No problem. Path created under 2018 Order that diverted Footpath 2 Botley. Not included in Definitive Map Statement of 01 January 2008. Note the section running parallel with the Winchester Road was constructed outside the limits of that road and therefore only has the status of footpath and should not be deleted from the Definitive Map. CAMS Report 28265 - Path unavailable 27 January 2020.

Mapping error

The Botley Parish boundary did not change in the 2018 reorganisation in the Upper Hamble Country Park so there is an error that pre-dates 2018. Footpath 15 Bursledon is now however in Hedge End. However, part of it should have been recorded as being in Botley. See the extract in Figure C below from the HCC on-line mapping showing the Parish boundary in blue and a section can be seen to the east thereof.

Parish boundary changes

West End Parish to Botley Parish has led to parts of three footpaths now being in Botley.

Footpath 6 West End. Obstructed. This path has been obstructed by the erection of a house on the Definitive alignment. Needs to be reported on CAMS. An unofficial diversion is in place, which needs to be put into legal effect. The Parish boundary is the hedge to the west, so it falls into Botley in its entirety.

Infrastructure Paper Appendix

Figure C - Extract from the HCC on-line map

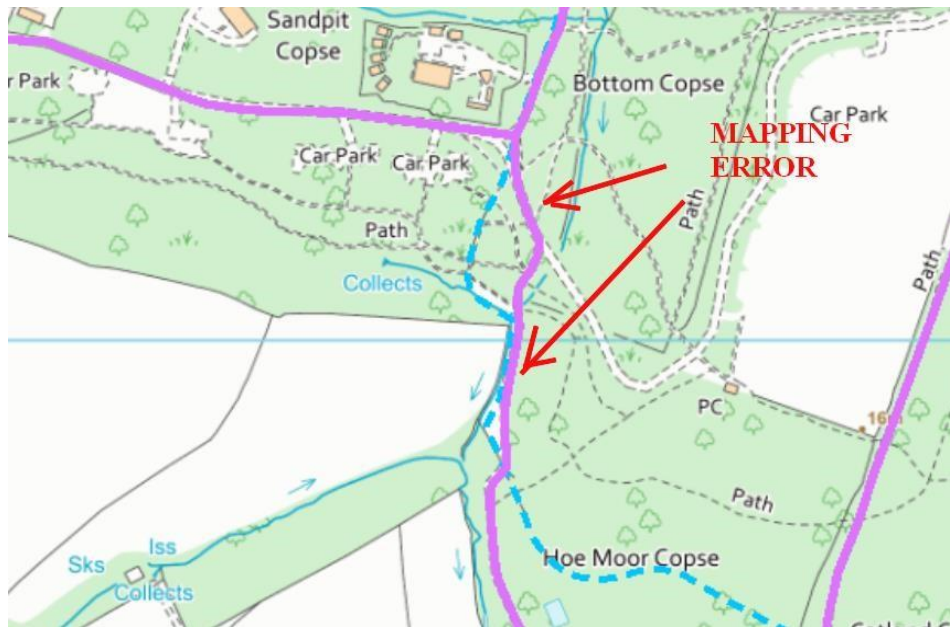


Figure D below is an extract from the 1888-1913 25" Ordnance Survey which shows where the footpath is legally before the plot in which the house is located was expanded to include land to the east and an extension built on the Definitive alignment.

Figure D - Extract from the HCC on-line map



Footpath 7a West End. No problem.

Footpath 7b West End. No problem.

Figure 61 - Boorley Gardens footpath layout



Infrastructure Paper Appendix

Figure 62 - Western Botley

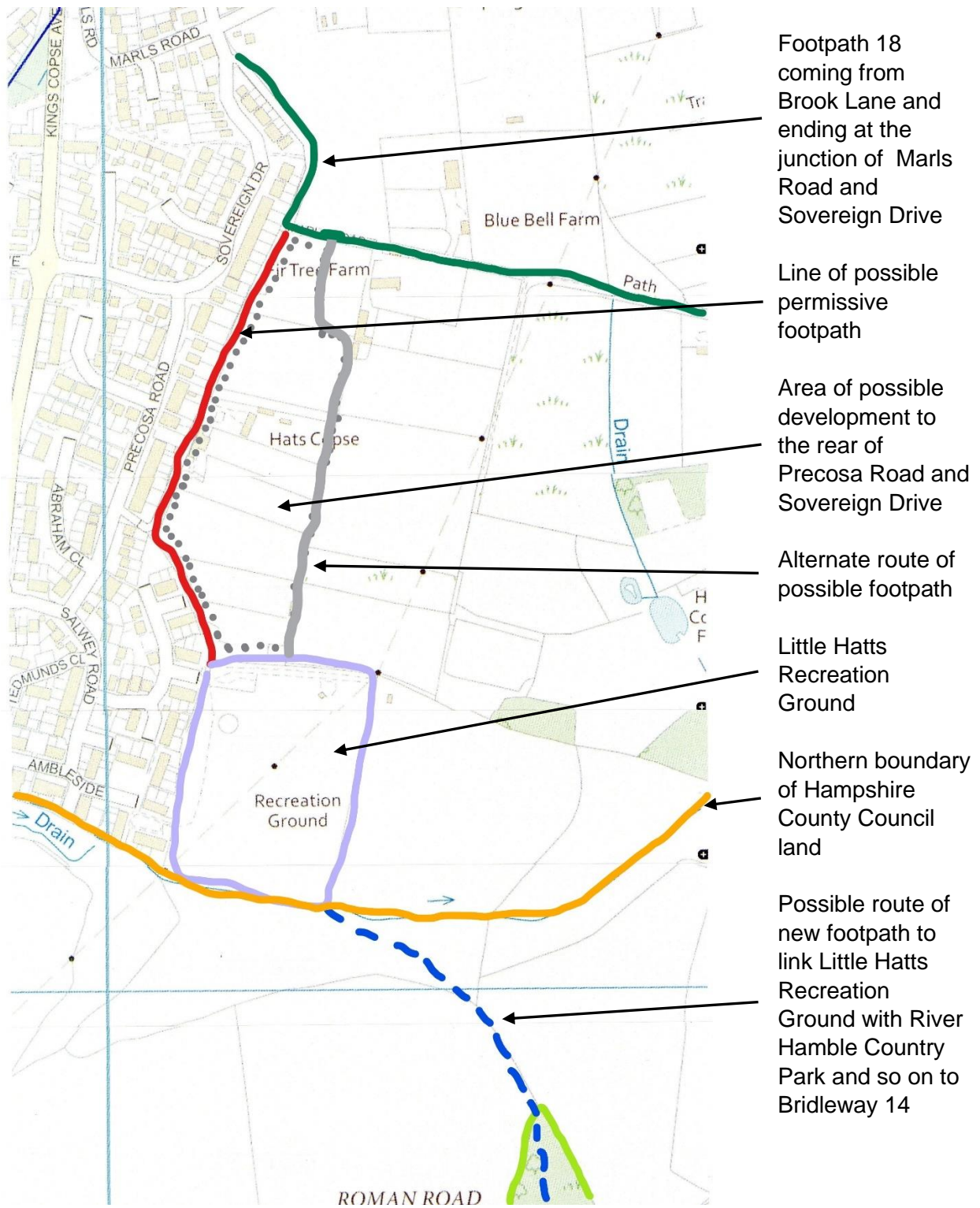


Figure 63 - The Botley to Bishops Waltham Bridleway Project

THE BOTLEY TO BISHOP'S WALTHAM BRIDLEWAY PROJECT

Statement of intent by the Parish Councils of Botley, Curdrige and Bishop's Waltham

The Councils will work together to achieve the creation of a bridleway between Botley and Bishop's Waltham through Curdrige to provide a safe off-road route for pedestrians, equestrians and cyclists on a route following the valley of the River Hamble

The only direct route from Botley to Bishop's Waltham is the B3035, a road with high levels of vehicular traffic. It is inherently dangerous for non-motorised users because of the bends, undulations and lack pavements or verges. A new route can be created between the two settlements located away from the B3035 in the valley of the River Hamble where the recreational opportunities can be maximised within an attractive and less polluted corridor. This would form a connection between Bishop's Waltham and Botley railway station at Curdrige, the bridleway to Hedge End, and create a link between the settlements around Southampton and the South Downs National Park including the proposed North Whiteley development.

The three Parishes have extensive equestrian facilities and activities, though a bridleway network does not exist between the settlements. All have witnessed an increase in cycling and recreational walking over the past few years. For these reasons the Parish Councils will work together with local landowners to achieve a practical route that can be of benefit to the whole community.

The Councils will work together in pursuance of the following objectives:

- Ensure that all statutory plans facilitate the creation of the bridleway
- Negotiate a route with the relevant landowners that is consistent with existing land uses
- Maximise opportunities to raise funding for such a project
- Purchase lands that could be used for a route when such opportunities arise
- Consider the needs of pedestrians, equestrians and cyclists when further proposals for development in their areas are promoted
- Oppose development within the Hamble Valley that makes non-motorised traffic less attractive or prejudices the establishment of an acceptable bridleway route within the Hamble Valley
- Participate in a Working Party dedicated to achieving these objectives and work with central government, all public bodies and national and local amenity organisations and landowners and their representatives who are interested in enhancing the bridleway opportunities in the three Parishes.

Infrastructure Paper Appendix

This statement of intent was adopted by:

- Botley Parish Council at its meeting on 09 September 2014 (Minute 2014/106/14/PAR);
- Curdrige Parish Council at its meeting on 18 September 2014 (Minute 2014/81); and
- Bishops Waltham Parish Council at its meeting on 14 October 2014 (Minute 14:151).



Infrastructure Paper Appendix

Figure 64 - Location of Bull Close

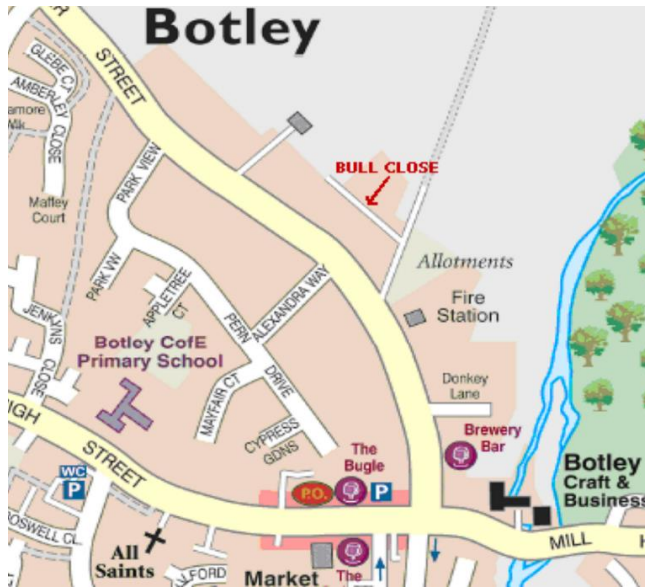
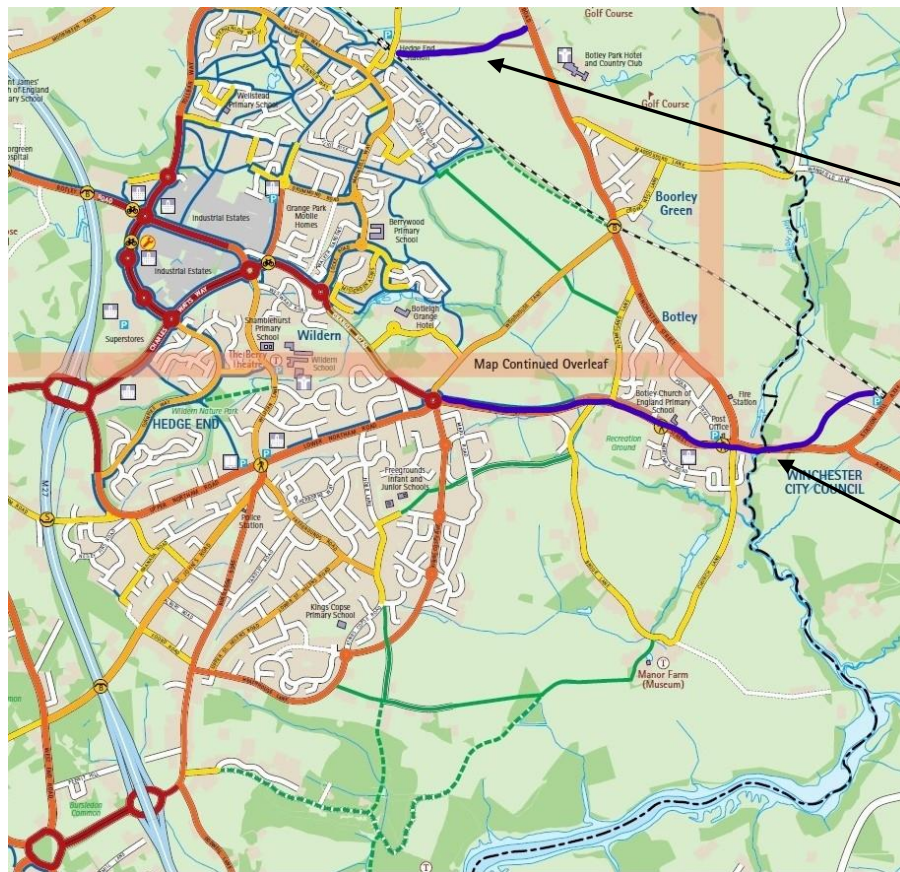


Figure 65 - Eastleigh Borough Council Cycleways and Bridleways (non-statutory) map 2015 (rural bridleways in green)



Indicative route of dual-purpose footpath and cycleway from Winchester Road to Hedge End Railway Station

Indicative route of dual-purpose footpath and cycleway from the Maypole Roundabout to Botley Railway Station

Figure 66 - Sherecroft Farm development

