

BOTLEY NEWS

BOORLEY PARK COMMUNITY FACILITIES

Boorley Park Sports Pavilion

This large and eye catching building is nearing completion. Many people have noticed the green roof but there is no need to worry about the plants during the summer; an automatic watering system has been installed in the building to take care of routine maintenance. The eco-friendly credentials of this building will include an array of south facing solar panels.

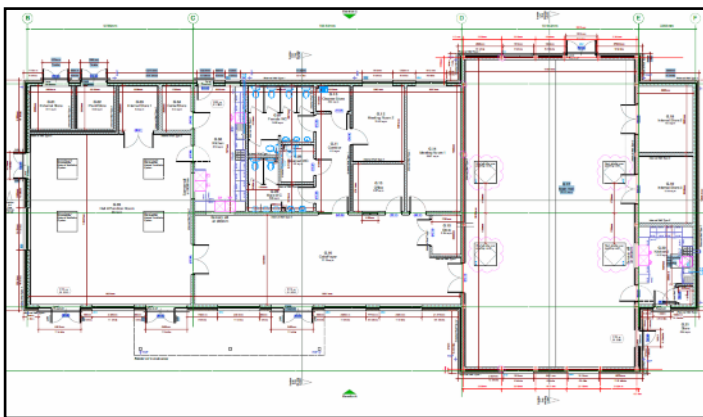
The Pavilion looking west. Work has progressed since this photo was taken. The scaffolding has gone and the stylish design of the building is clearly on show.



The Pavilion facing Maddoxford Lane. The building incorporates Public Toilets and a deep canopy to shelter spectators watching football matches. The row of windows brings daylight into the central corridor of the building.

Boorley Park Green Space

Many readers will have watched the grass slowly appearing on the football pitch site alongside Maddoxford Lane. We had hoped to be able to tell you in this edition of the newsletter when the green space would be open for public use, but unfortunately it is unlikely to be available in time for this year's school summer holidays.



The new Centre has a splendid foyer leading to a large multi-use hall and two meeting rooms. The room to the left of the building will be a new Community Café.

The new Community Centre

The construction of this building is due to be finished during August after which it will be fitted out and equipped. One of the rooms in the new Centre is being equipped as a community café which we hope will become a meeting place and entertainment space for residents.

Boorley Park Allotments

Botley Parish Council apologises to everyone who has put their name forward onto the new allotments' waiting list. Unfortunately at the time of printing there is no further news on when the land will be ready to hand over and the setting out of the site can begin. As soon as we have some positive news we will contact everyone on the waiting list.

WE NEED YOUR FEEDBACK

The Botley Neighbourhood Plan Committee has carefully considered your answers to the Parish wide Neighbourhood Plan questionnaires in 2016 and 2017 together with your comments at the Neighbourhood Plan exhibitions at the Botley Centre in 2016 and 2017.

From this we have created a Vision Statement, which very briefly states what Botley should be like in 2036 and a set of Objectives which would help create the changes needed to achieve the Vision.

We need you to let us know whether you broadly agree or disagree with the Vision and Objectives to help us to revise them appropriately. However, we would ask you to remember that the Objectives must be achievable and so not every suggestion is going to be feasible.



Please take the time to give us your comments either to NP-feedback@botley.com or in writing to the Parish Council Office at the Botley Centre.

When commenting on specific Objectives please identify these with the section number.

Without your feedback, the Committee cannot create a Plan that reflects the community's views and aspirations.

Vision Statement (this is an over-arching view of what you would like Botley to be like in 2036)

In 2036, Botley remains a warm and friendly place to live, to work in and to visit. New developments have been well incorporated into the Parish and have provided homes needed by both the local and wider community and for all generations.

Well managed infrastructure and resource facilities provide the residents with a quality environment, good access to health care, excellent educational opportunities and reliable access to modern technologies.

Local children and young people can walk or cycle safely to their educational establishments or the numerous play and green areas on the myriad of footpaths and cycleways introduced over the last 20 years. These routes now provide a healthy alternative network for pedestrians and cyclists throughout the locality and link to neighbouring Parishes.

The by-pass has been built and an update to the routing system and traffic calming measures in the Parish has led to a decrease in rat-runs and has been effective in creating safer roads.

The village centre has been recognised as an important asset of heritage, businesses and shops providing a popular destination for locals and visitors alike.

1 Community Objectives

- 1.1 Maintain the current character of Botley by protection of Listed Buildings.
- 1.2 Prioritise future development in Botley to ensure appropriate infrastructure is in place prior to new development commencing.
- 1.3 Retain and improve community facilities in order to improve social cohesion within our community and strengthen integration of new developments into the existing Parish.
- 1.4 Ensure any new development has an appropriate mix of housing to meet the needs of the present and future community of Botley.
- 1.5 Ensure development in Botley is of appropriate design and fits with the general character of Botley.
- 1.6 Ensure new developments consider the changing needs of evolving environmental developments.
- 1.7 Ensure new developments and housing extensions, out-buildings, garages and conservatories, including those under Permitted Development Rights, are consistent with the requirements of the strategic high and intermediate pressure pipelines passing through the Parish.
- 1.8 Prevent the loss of local green space.
- 1.9 Maintain the gaps between settlements.
- 1.10 Improve and develop recreation spaces, especially at Little Hatts and Boorley Park.
- 1.11 Improve the parking at the Botley Centre to ease congestion when the Centre is busy.

- 1.12 Provide a pedestrian crossing across the High Street for pedestrian access to the Botley Centre and Recreation Ground.
- 1.13 Protect present and future archaeological sites from damaging or insensitive development.
- 1.14 Maintain and improve the network of movement routes in and around the Parish to improve access to both key services, schools and recreational pursuits.
- 1.15 To ensure integration of all new developments into the wider community, create links to key service centres and public areas through a new network of movement routes.
- 1.16 Ensure that measures are in place to encourage through traffic to use the Botley bypass.
- 1.17 Improve parking around the Square, including making the Square a shared space for pedestrians and traffic and improving access for those less able bodied.
- 1.18 Discourage existing retail outlets being developed into dwellings under change of use.
- 1.19 Promote the further retail development of the Botley Mill site.
- 1.20 With the aid of a developer contribution agreement:
 - a improve the access from the Village Square to the Botley Mill site by:
 - i providing a pedestrian crossing at the Village Square end of Winchester Street
 - ii widening the pavement in Mill Hill between Winchester Street and the Botley Mill
 - b Create a Botley Museum within the Botley Mill to highlight local history and heritage

2 Community Aspirations

- 2.1 Create a Local History Trail to increase enhanced awareness of local history.
- 2.2 Maintain community cohesiveness by developing local resources that benefit all residents.
- 2.3 Work as a Parish and with other agencies to improve the recreational opportunities for young people.
- 2.4 Protect and when possible enhance the cultural and community assets of the Parish that are of value to the community. Identify assets of community value which should be retained under the "Right to Bid" legislation in order to strengthen community cohesion.
- 2.5 Reduce speed through The Square to 20 mph.
- 2.6 Improve the environment for retailers and the hospitality sector in the village centre.
- 2.7 Consider reduction of vehicle speeds and weight (except for deliveries) along the whole of Winchester Street, High Street, Broad Oak and Kings Copse Avenue.
- 2.8 Improve the medical and NHS dental services, both around the village centre and at Boorley Green.
- 2.9 Improve the mobile phone reception and broadband speed and reliability.
- 2.10 Improve the water pressure in Winchester Street, particularly in relation to potential worsening of the situation with the Winchester Street development.
- 2.11 Encourage educational and life skills provision that meets the aspirations and needs of all to promote high standards of achievement and a sense of well-being.
- 2.12 Ensure that as far as possible all pupils living within the Parish have access to their local catchment school.
- 2.13 Encourage active and continual use of all public areas within the community.
- 2.14 Support measures that encourage on going social and recreational activities which help to increase opportunities for community integration.

On behalf of Botley Parish Council, Cllr David Weeden, Chairman of the Neighbourhood Plan Committee

LIFE NEAR THE FAST LANE? TIME TO TAKE SOME ACTION

Studies have shown that residents of Hampshire and the Isle of Wight feel that speeding is one of the factors which most affects the quality of life in their communities; this in turn makes it one of Hampshire Police's biggest community priorities.

One way of approaching the problem is setting up a Community SpeedWatch programme, where the Police and residents are working together.

SpeedWatch allows members of the community to become police support volunteers and take action on roads of concern in their area.

Community SpeedWatch is an educational scheme, not enforcement. It is considered as the first tier response to speeding issues. If a problem persists, it



can be escalated to tier two, meaning that enforcement can be undertaken by the police neighbourhood policing teams.

How does it work?

Being a community scheme, SpeedWatch can only take place in lower mph limits or zones. Schemes are managed by the local Safer Neighbourhood Teams but run by volunteers. Volunteers are trained to use equipment that monitors the speed of passing traffic and to then record the details, later adding them to a database. Vehicle checks are undertaken by the police and letters are sent to the registered keepers advising them of their speed and reminding them of why it is a community concern.

In order to form a SpeedWatch team in Botley a group of at least 6 residents is needed. Having a group this size helps to keep the team effective and means there can be a nucleus of 3 or 4 volunteers available.

For more information or to register your interest please contact Botley's PCSO, Steve Hill by emailing stephen.hill@hampshire.pnn.police.uk or contact the Parish Clerk, 01489 787181, email parish.clerk@botley.com



Hampshire Alert Community Messaging System

The communities of Hampshire and the Isle of Wight play a key role in helping the police to prevent and detect crime and anti-social behaviour. Improving the flow of information between the community and the police is vital to achieving the aim of working together

to deter criminals and keep communities safe. The Hampshire Alert website provides an invitation for you to participate in the exchange of information with Hampshire Constabulary and Neighbourhood Watch.

If you live or work in Hampshire or the Isle of Wight, you are invited to register now to become a recipient of messages of information, crime alerts and witness appeals local to the area in which you live or work in a way that suits your needs and lifestyle by email, text or telephone.

Registering can be done via the website <https://www.hampshirealert.co.uk> or by form, collected from the Parish Office at the Botley Centre, High Street Recreation Ground

As a registered recipient you will not only benefit from two way messaging but may also hear about positive police action in your community, help identify suspected or wanted criminals or learn about community groups, events or meetings in your area.

Please note that this service is not for reporting crimes or incidents, which can be done as detailed below.

Call 101* when



a crime has happened



you want to speak to a police officer



you want advice or information

Call 999 when



a crime is happening



someone is in danger



someone is being violent

The police are here to help

*101 is available 24 hours a day, 7 days a week across England and Wales. Calls from landlines and mobile networks cost 15 pence per call, no matter what time of day or how long you are on the phone.



COMMUNITY INFORMATION DAY SUCCESS

With over 400 visitors and local volunteers from 23 local groups and organisations, Botley's Community Information Day on Saturday 11 May was a big success and much enjoyed by everyone who attended.



It was good to see so many people who wanted to find out about the services, facilities and activities Botley has to offer as well as taking time out to relax and join in the fun. There were visitors enjoying themselves and watching the children trying the outside activities such as the soft archery and juggling and the busy craft tables had whole families making things together.

Information was available about using the internet safely and accessing community transport; Parish Councillors were on hand to talk about local government and the Parish Council's role and responsibilities in Botley. People who had recently moved to the area enjoyed chatting to other residents and finding out about the different services and advice groups available. Many people came simply because they wanted to get involved and make new friends.



If you weren't able to come along to the day you can find useful information and learn about different things to do and get involved with by checking out the useful guide at <https://www.botley.com/botley-directory>

BOTLEY & CURDRIDGE WELFARE TRUST

A small, local charity which can provide assistance for people of any age within the Parishes of Botley and Curdridge.

If you or someone you know are in need, please contact the Chairperson in the first instance: Vanessa Bord 01489 786245

All requests are dealt with in strict confidence.

Need help making a new Universal Credit claim?

At Citizens Advice Eastleigh we can support you to make a new claim for Universal Credit, from opening your account to receiving your first full payment.

Our trained advisers can help you to:

- Set-up your Universal Credit account
- Complete your claim to-dos
- Verify your identity
- Make sure you're providing the right evidence to the Jobcentre
- Understand what Universal Credit will mean for you

If you're not sure what help you need just get in touch and we can work out how we can support you.

Need help making a new Universal Credit claim?

Visit us: 101 Leigh Road, Eastleigh, SO50 9DR
Monday to Thursday, 10am to 4pm

Call: Freephone 0800 144 8 444



You can find information on Universal Credit on our website: citizensadvice.org.uk/universalcredit



BOTLEY GARDENING CLUB

This friendly local club welcomes new members - both active and 'passive' gardeners and anyone interested in plants and the environment. We meet at Botley Market Hall every month with talks on many topics.

Come along to our annual Autumn Open Show at the Market Hall on Saturday 14 September or find out more about the club by phoning 01489 781155.

BOTLEY GARDENING CLUB ANNUAL AUTUMN SHOW

SATURDAY 14 SEPTEMBER, 1 PM

BOTLEY MARKET HALL

Get your schedule and take part!
Call 01489 786166



Fabulous flowers,
plants, vegetables,
fruit, home
industry and
children's art

BOTLEY MARKET HALL

Did you know this historic Hall is owned and run by a local charity? Did you know that it hosts over 20 clubs and groups serving all ages and interests, and that you can hire it for your function or party? Did you know that it is run by local volunteers? Why not join the friendly team who run the Hall and ensure it serves the local community? It is a great way to do your bit for the community as well as meeting new people and making friends - we welcome you - no experience necessary, just an interest in helping the community.

Find out more by ringing Derek on 01489 781155 or see our website: <http://botleymarkethall.org.uk>

LIVE STAND-UP COMEDY at BOTLEY MARKET HALL

Saturday 7 September, Saturday 21 December

Doors open at 7.00pm, show starts at 8.00pm

Fully stocked bar available

Tickets £15 available via
www.funnypeoplecomedyclub.com

PROBUS CLUB OF HAMBLE VALLEY

We are a Club for retired and semi-retired men who meet in the Diamond Jubilee Hall at the Botley Centre on the 1st and 3rd Wednesday of each month from 10am to 12 noon. At our meetings we enjoy good company and interesting talks on wide-ranging topics.

Forthcoming talks:

July and August: summer break
4 September: Captain Ralph Kites
18 September: Words and Music of the 1960's
2 October: The Kings Theatre, Portsmouth
16 October: Equipping the Armada
6 November: The Miracle Flower
20 November: AGM
4 December: Christmas Lunch

New members are very welcome. Please contact the Secretary, Martin Mills on 01489 788659.

Free Use of the MUGA at Botley High Street Recreation Ground for children during the summer holidays

Monday - Friday 9.00am - 4.30pm,
subject to availability or use by pre-booked groups

Ask at the Parish Office in the Botley Centre,
adjacent to the MUGA

FLUTTERBIES

Calling Mums. Dads. Grans. Grandpas and carers-
FLUTTERBIES is a small, friendly baby and
toddler group held each Tuesday (term time)
between 9.45 - 11.45am in All Saints' church
room, High Street, Botley.

We have a wide selection of toys to explore and
craft and singing activities to take part in.
Tea and coffee for adults is provided.
There is no set charge for the sessions.
We have spaces for the new term starting on
Tuesday 10 September.

Please come along.
we look forward to welcoming you.

Elizabeth Townsend (Leader of Flutterbies)



Christmas is Coming!



Every year Botley Parish Council organises the hugely popular and successful 'Carols in the Square'. This year's event will be **Sunday 15 December** in the afternoon.

The unsung heroes of the event are the volunteers who give up their time to help patrol the car park and road closure points to keep the public safe and the event zone free of traffic.

If you can help your community with this aspect of the Christmas event then Botley Parish Office would love to hear from you.

More volunteers means shorter marshalling time slots and more time to enjoy the Christmas atmosphere in the Square.

Hi-viz vests, 2-way radios (where necessary) and a full briefing on the duties involved will be given.

Please contact the Parish Office 01489 787181 or send an email to deborah.barnes@botley.com

BOTLEY NEWS

The Parish Council's newsletter is delivered to all residents three times a year, in the spring, summer and winter. It keeps you in touch with Council news and local organisations and events.



Copies to a few outlying properties are posted, but it is not cost effective to post to all households. The vast majority of newsletters have always been delivered by volunteers and the Council is very thankful for their help, but to find some more people willing to help would be even better.

You don't have to deliver to lots of houses; in fact it would be a good idea to have more deliverers with fewer copies to take round - less weight to carry and less far to walk. It is also an opportunity to further explore the area, meet your neighbours and perhaps make some new friends.

As the number of houses at Boorley Park continues to rise it would be particularly good to recruit some more volunteers to deliver in this area.

If you feel that you could deliver Botley News just in your road, we would love to hear from you. It doesn't matter if perhaps there are only a dozen houses; in the words of the well known store 'every little helps'. If you live in a longer road perhaps a neighbour could share the job; one side each?

Please contact the Parish Office 01489 787181 or send an email to deborah.barnes@botley.com

Don't train in the dark on muddy grass pitches!

Bring your team to BOTLEY MUGA



2 flood-lit all weather astro turf pitches at the High Street Recreation Ground.

No extra charge for floodlights

Spaces available: Monday - Thursday, various time slots between 6pm & 10pm

For details and prices phone 01489 787181

or e-mail deborah.barnes@botley.com

Play WALKING FOOTBALL At Botley MUGA



5-a-side football, no slide tackling, no running, low impact but still competitive and played with passion! Cost: £3 per session pay on the day Two 90 minute sessions a week, come to one or both.

Mondays 1-2.30pm Wednesday 11.30am-1pm

For more information contact the Parish Office: 01489 787181

THE BOTLEY CENTRE HELPING YOU TO HOST YOUR EVENT

Centrally located with ample parking Small, medium & large rooms Disabled access and toilets All hire rooms have hearing loops



For enquiries and bookings contact Wendy Whitfield, Bookings Manager

Tel 07834 171061

Email wendy.whitfield@botley.com

The theme for the Parish Council's 2020 calendar will be 'Community Celebrations, Past and Present' and we would love include photos from residents' own archives and albums.

Botley has always been proud of its heritage but whilst buildings make a village, it is people that make a community. Over time the number of houses and residents in the parish has increased but there is still only one community and the Parish Council would like to celebrate it in the 2020 calendar.

If you have photos of past or present community celebrations in Botley that you would like to be considered, please bring them to Botley Parish Office, at the Botley Centre, High Street Recreation Ground by 23 August.

Put them in an envelope with your name and contact



details clearly printed on the front. They will be returned to you once the calendar pictures have been selected. Please add any details you know about the photo, such as the year, the place and the event that it shows. If your photo was taken within the last 5 years and the people are clearly recognisable, you must have obtained permission for the pictures to be used.

We are looking for pictures that show local residents involved in things like carnivals, parades, sports days, commemorations and annual events, preferably taking place in a recognisable Botley locations.

Please note that 'Botley' refers to Botley Parish, which covers Botley village, western Botley, Boorley Green and Boorley Park. If you receive this newsletter you live in Botley Parish.

Parish Council Meetings

The Council's meetings take place at 7.15pm on the second Tuesday of every month. Planning & Highways Committee meetings start at 7.15pm on the fourth Tuesday of each month, followed at 8.15pm by either the Recreation or Policy & Resources Committee.

Meetings are open to the public and are held in either the Diamond Jubilee Hall or in the Committee Room at the Botley Centre. See Parish Council notice boards for dates and agenda details.

Parish Councillors

Councillor	Address	Telephone	E-mail
Ronald Clark	19 Rowley Drive SO30 2SN	01489 690218	ron.clark@botley.com
Mrs Sue Grinham	8 Ravenscroft Way, SO32 2FZ	01489 781680	Sue.grinham@botley.com
Roger Hann	9 Crows Nest Lane, SO32 2DD	01489 795299	Roger.hann@botley.com
Graham Hunter Vice Chairman	13 Salwey Road SO30 2SX	01489 785501	graham.hunter@botley.com
Jeffrey Jones	54 Precosa Road SO30 2NX	01489 785659	jeffrey.jones@botley.com
Rupert Kyrle Also Borough & County Cllr	6 Sherwood Ave, Hedge End SO30 0YJ	02380 407045	rupert.kyrle@botley.com
Colin Mercer Chairman	Shapwick, Brook Lane SO30 2ER	01489 784246	colin.mercer@botley.com
Adrian Trace Also Borough Cllr	Montague House, Broad Oak SO30 2EU	01489 690322	Adrian.trace@botley.com
David Weeden	Appletrees, Brook Lane SO30 2ER	07468 412950	David.weeden@botley.com
Stephen Wildin	36 Tickner Close, Botley SO30 2SW	0777 6232152	Stephen.wildin@botley.com
Kevin Williamson	9 Holmesland Walk SO30 2DZ	01489 787181 (contact via Parish office)	kevin.williamson@botley.com

Clerk to the Parish Council

Mrs Janet Morgan, Botley Parish Council, The Botley Centre, High Street, Botley SO30 2ES
Telephone: 01489 787181 e-mail: parish.clerk@botley.com